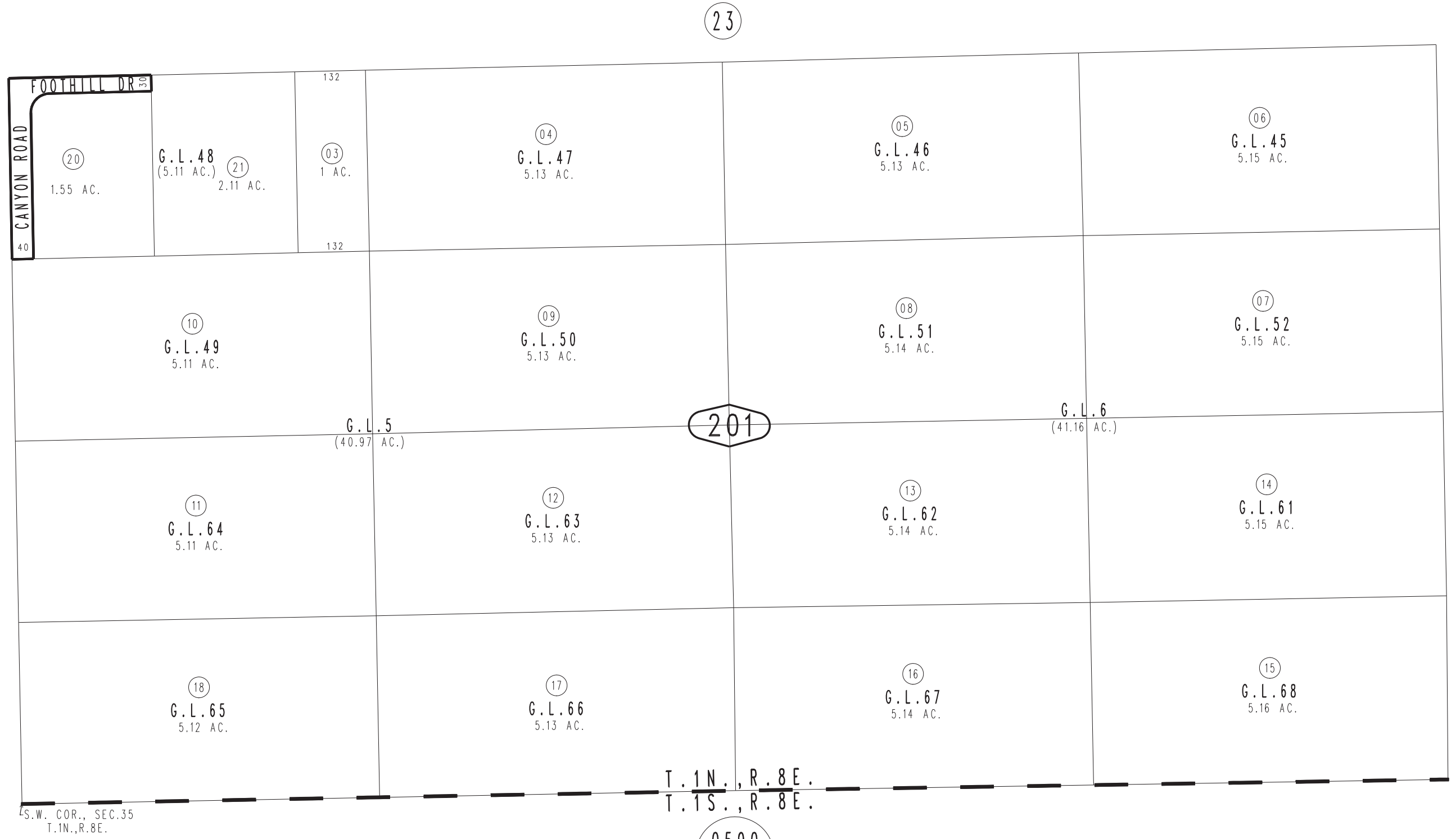


THIS MAP IS FOR THE PURPOSE
OF AD VALOREM TAXATION ONLY.

S.1/2, S.W.1/4, Fractional Sec.35, T.1N.,R.8E., S.B.B.&M.

City of Twentynine Palms 0614 - 20
Tax Rate Area
19001



S.W. COR., SEC.35
T.1N.,R.8E.

T.1N.,R.8E.
T.1S.,R.8E.

0590
04

REVISED
05/09/13 LH-MC

Assessor's Map
Book 0614 Page 20
San Bernardino County