

THIS MAP IS FOR THE PURPOSE
OF AD VALOREM TAXATION ONLY.

N.1/2, N.W.1/4, Fractional Sec.31, T.1N.,R.8E., S.B.B.&M.

City of Twentynine Palms
Tax Rate Area
19001

0613 - 10

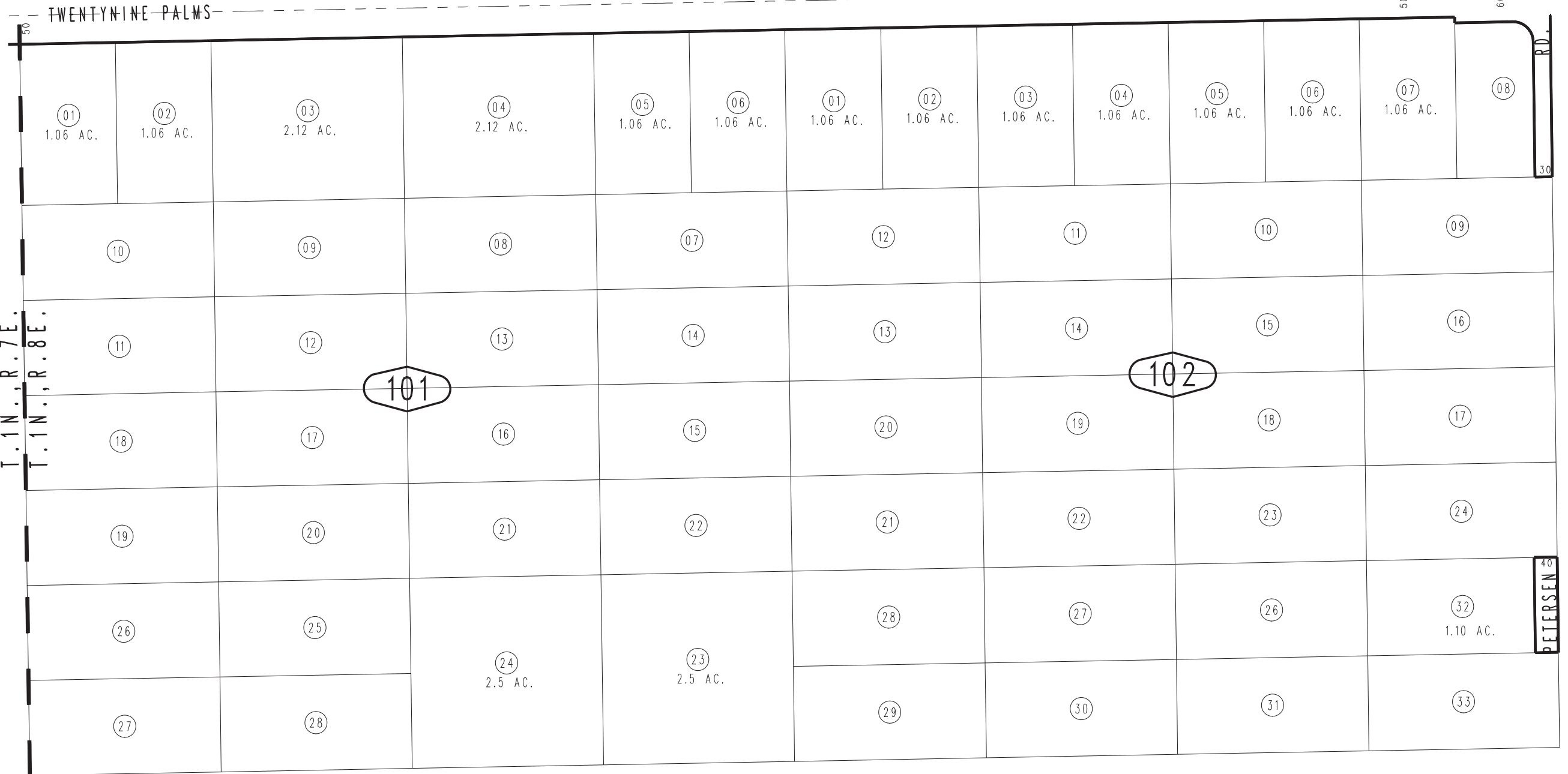


13

N.1/4, COR., SEC.31
T.1N.,R.8E.

HIGHWAY

1"=200'



0608
13

11

09