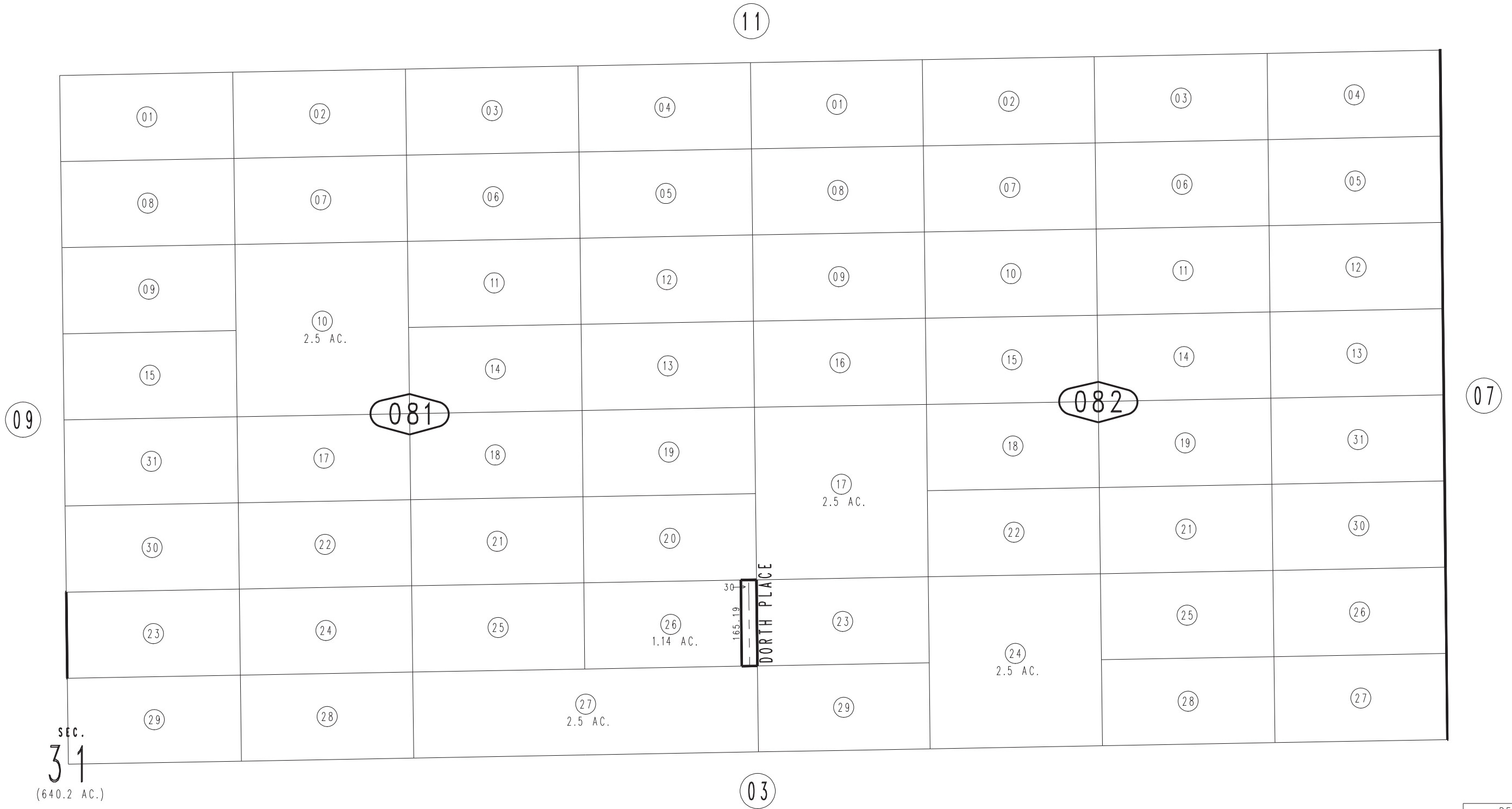


THIS MAP IS FOR THE PURPOSE
OF AD VALOREM TAXATION ONLY.

S.1/2, N.E.1/4, Fractional Sec.31, T.1N.,R.8E., S.B.B.&M.

City of Twentynine Palms
Tax Rate Area
19001

0613 - 08



SEC.
31
(640.2 AC.)