

THIS MAP IS FOR THE PURPOSE OF AD VALOREM TAXATION ONLY.

Ptn. S.W.1/4, S.E.1/4, Sec.24, T.1N.,R.8E., S.B.B.&M.
Ptn. Tract No. 3966, M.B. 50/86-87

City of Twentynine Palms
Tax Rate Area
19001

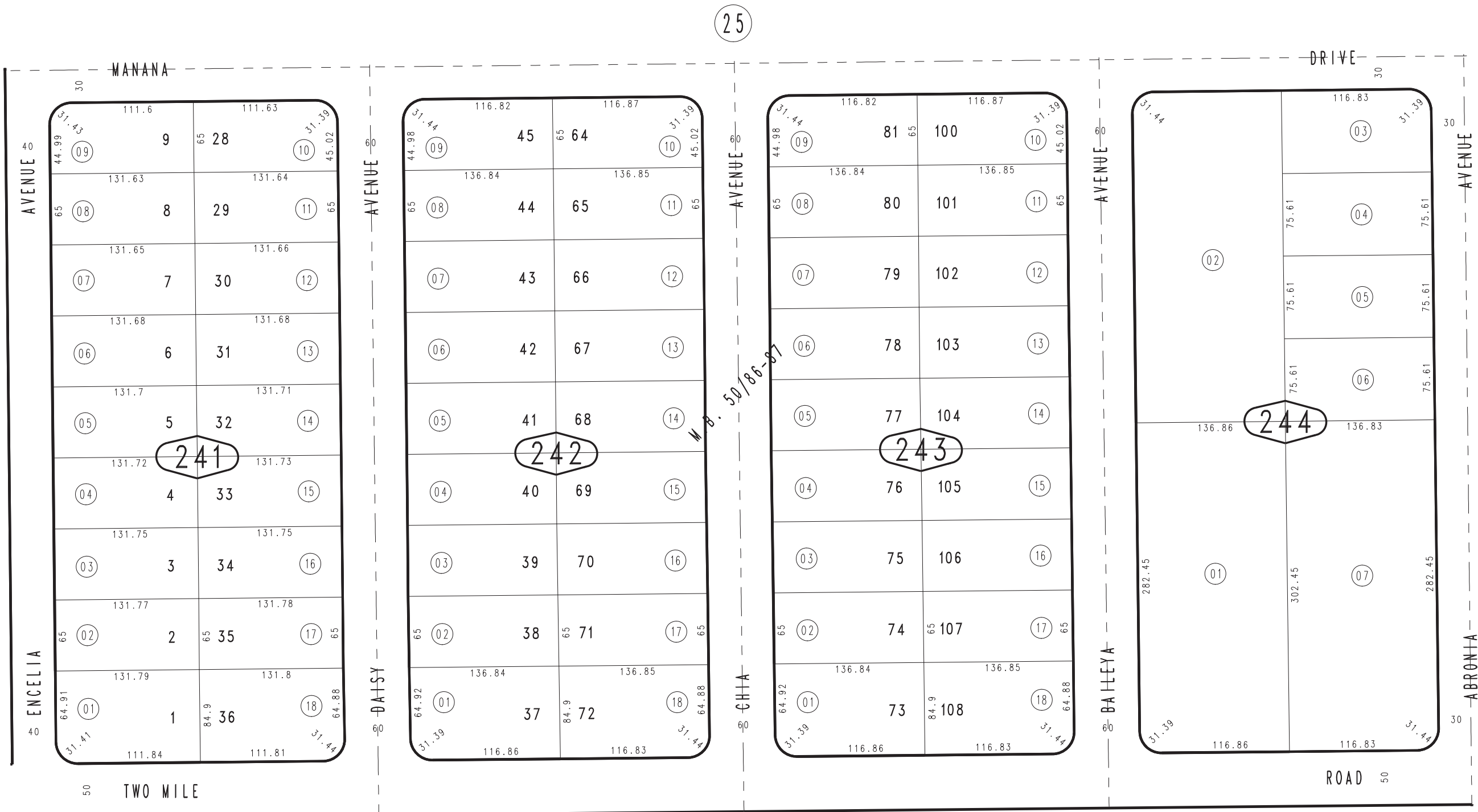
0612 - 24



1"=100'

23

31



S.1/4, COR., SEC.24,
T.1N.,R.8E.

0615
21

REVISED