

THIS MAP IS FOR THE PURPOSE  
OF AD VALOREM TAXATION ONLY.

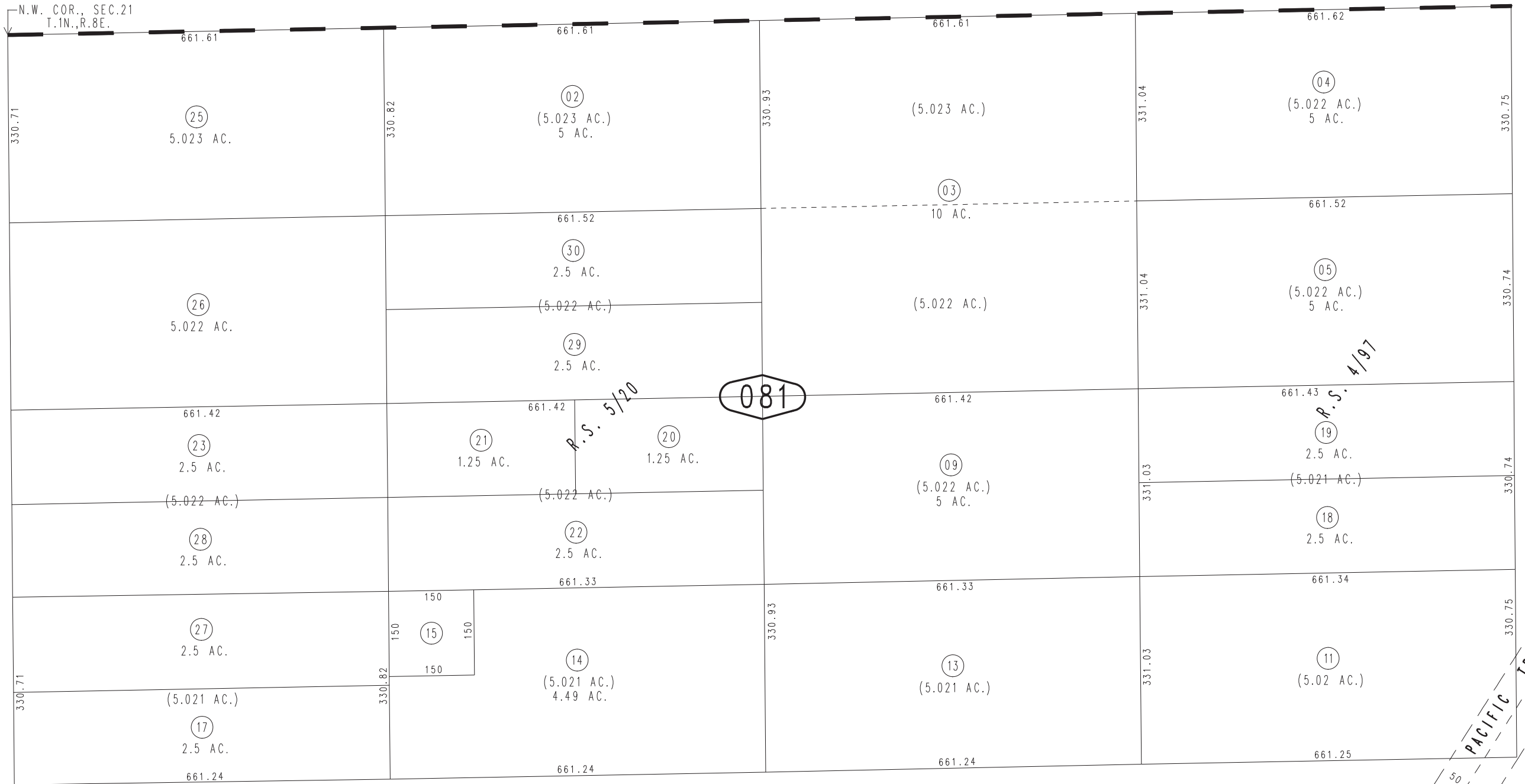
N.1/2, N.W.1/4, Sec.21, T.1N.,R.8E., S.B.B.&M.  
R.S. 4/97 & 5/20

City of Twentynine Palms  
Tax Rate Area  
19001

0612 - 08



0609  
09



09

081

07

05