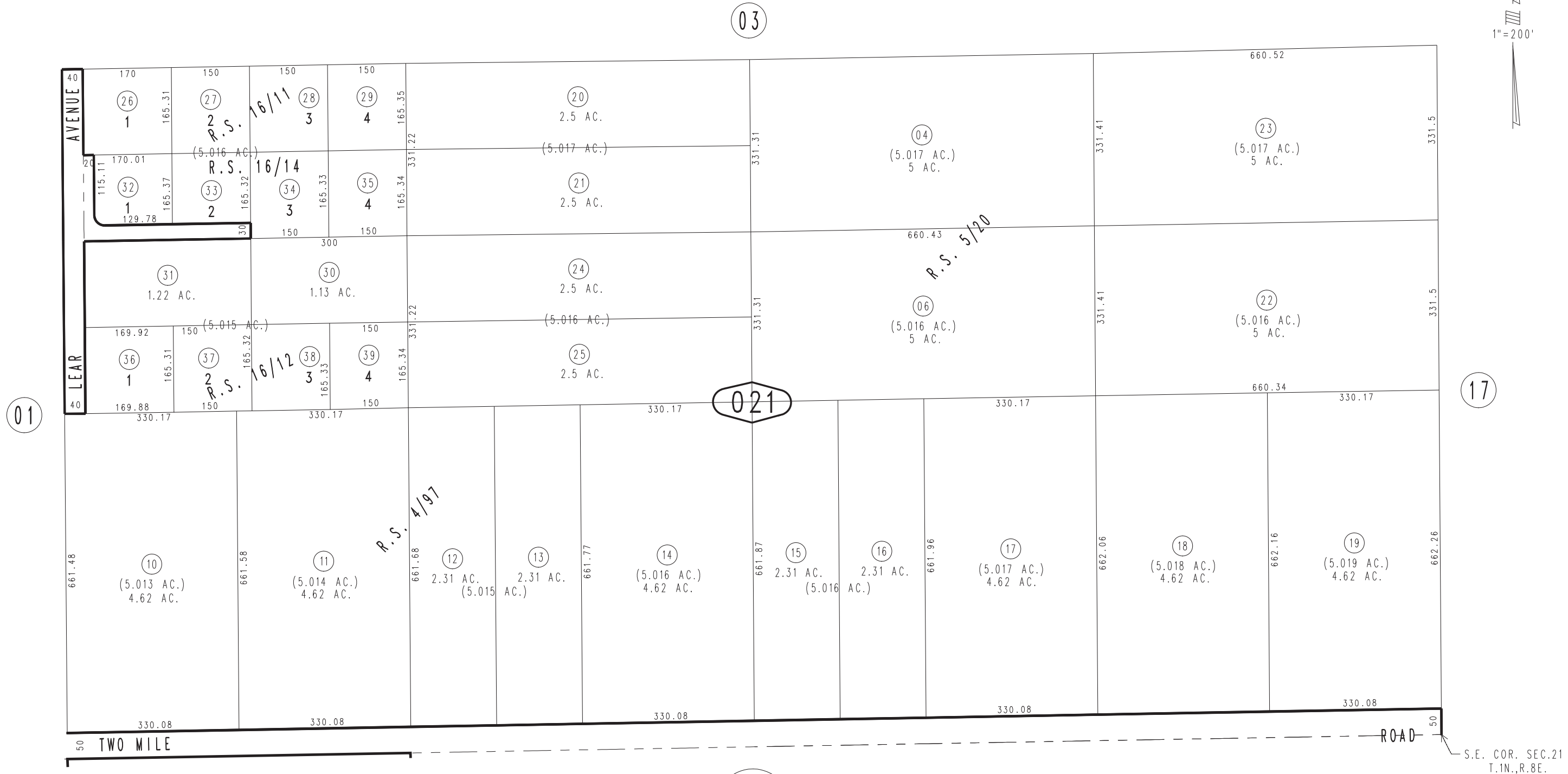


THIS MAP IS FOR THE PURPOSE OF AD VALOREM TAXATION ONLY.

S.1/2, S.E.1/4, Sec.21, T.1N.,R.8E., S.B.B.&M.
R.S. 4/97 & 5/20

City of Twentynine Palms
Tax Rate Area
19001

0612 - 02



R.S. 16/14
R.S. 16/12
R.S. 16/11
R.S. 5/20
R.S. 4/97

February 2005

Assessor's Map
Book 0612 Page 02
San Bernardino County

REVISED
07/24/13 RM-MC