

THIS MAP IS FOR THE PURPOSE
OF AD VALOREM TAXATION ONLY.

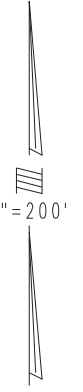
N.1/2, S.E.1/4 Sec.20, T.1N.,R.8E., S.B.B.&M.

City of Twentynine Palms
Tax Rate Area
19001

0609 - 05

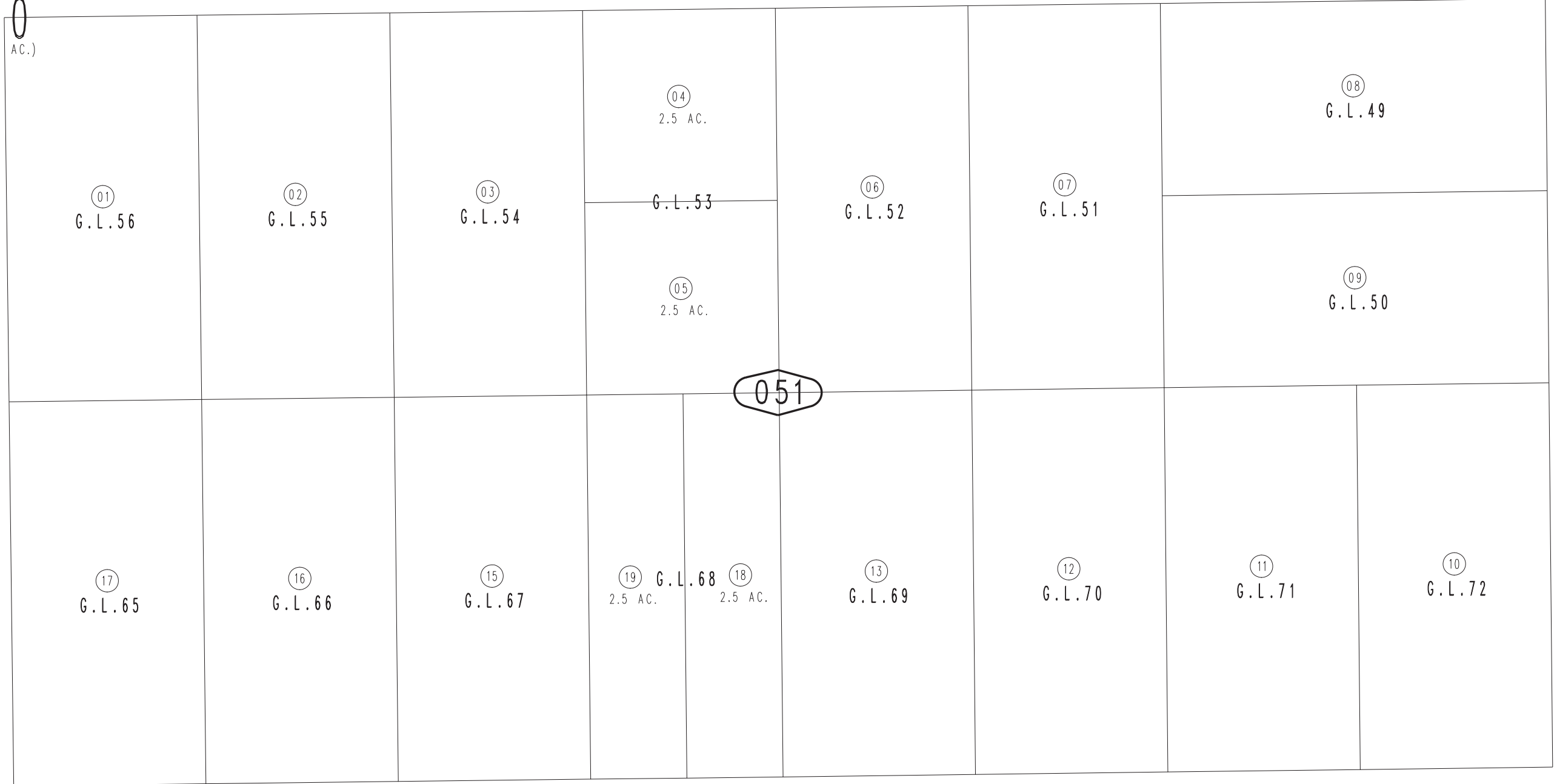


SEC.
20
(640 AC.)



03

0612
04



04