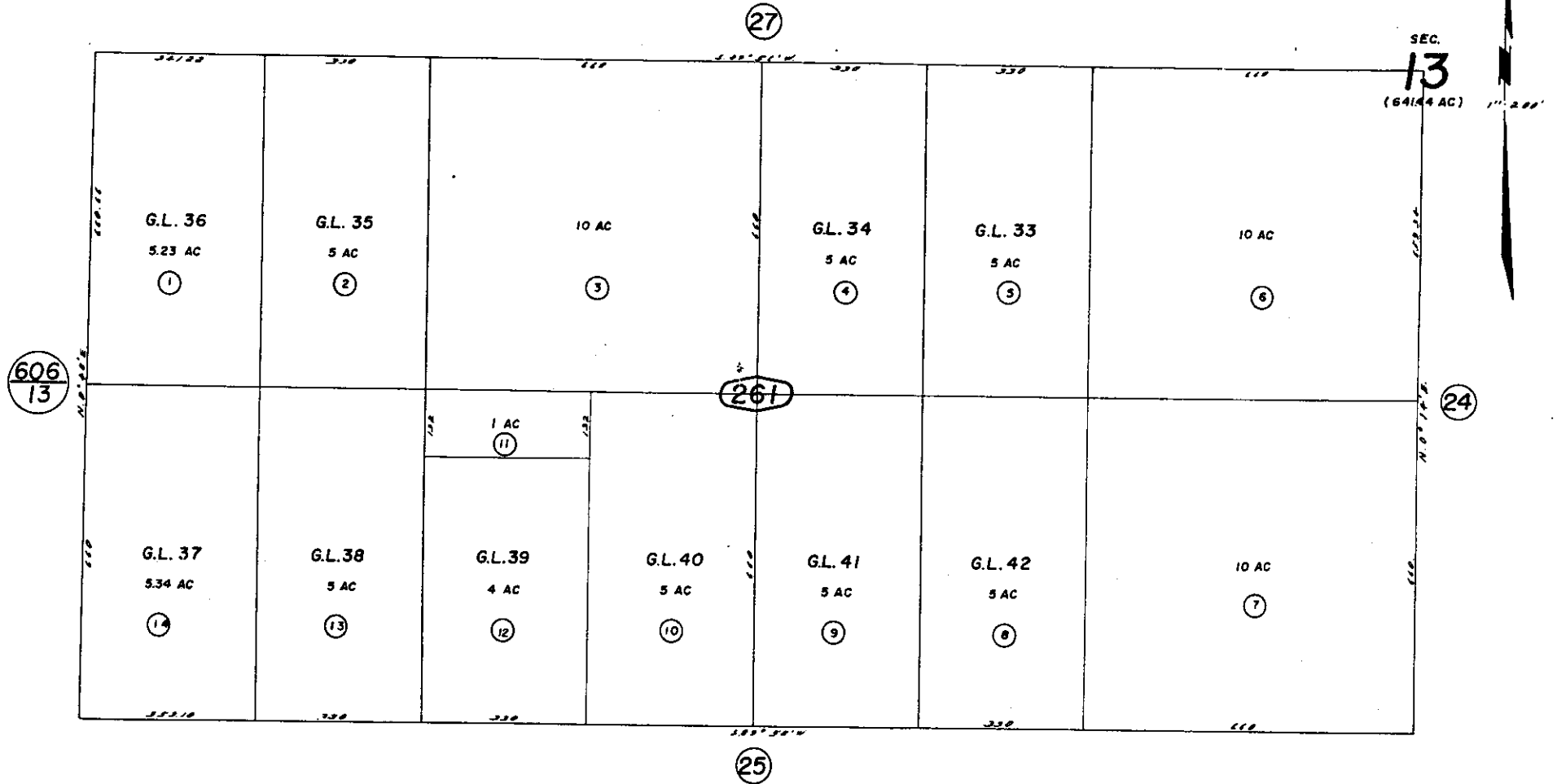




N.1/2, S.W.1/4 Fractional Sec. 13, T.1N., R.7E. S.B.B. & M.

Morongo Unified
Tax Code Area
9404

608-26



Note-Assessor's Blk. & Lot
Numbers Shown in Circles

Assessor's Map
Book 608, Page 26
San Bernardino County

REVISED
1-25-68