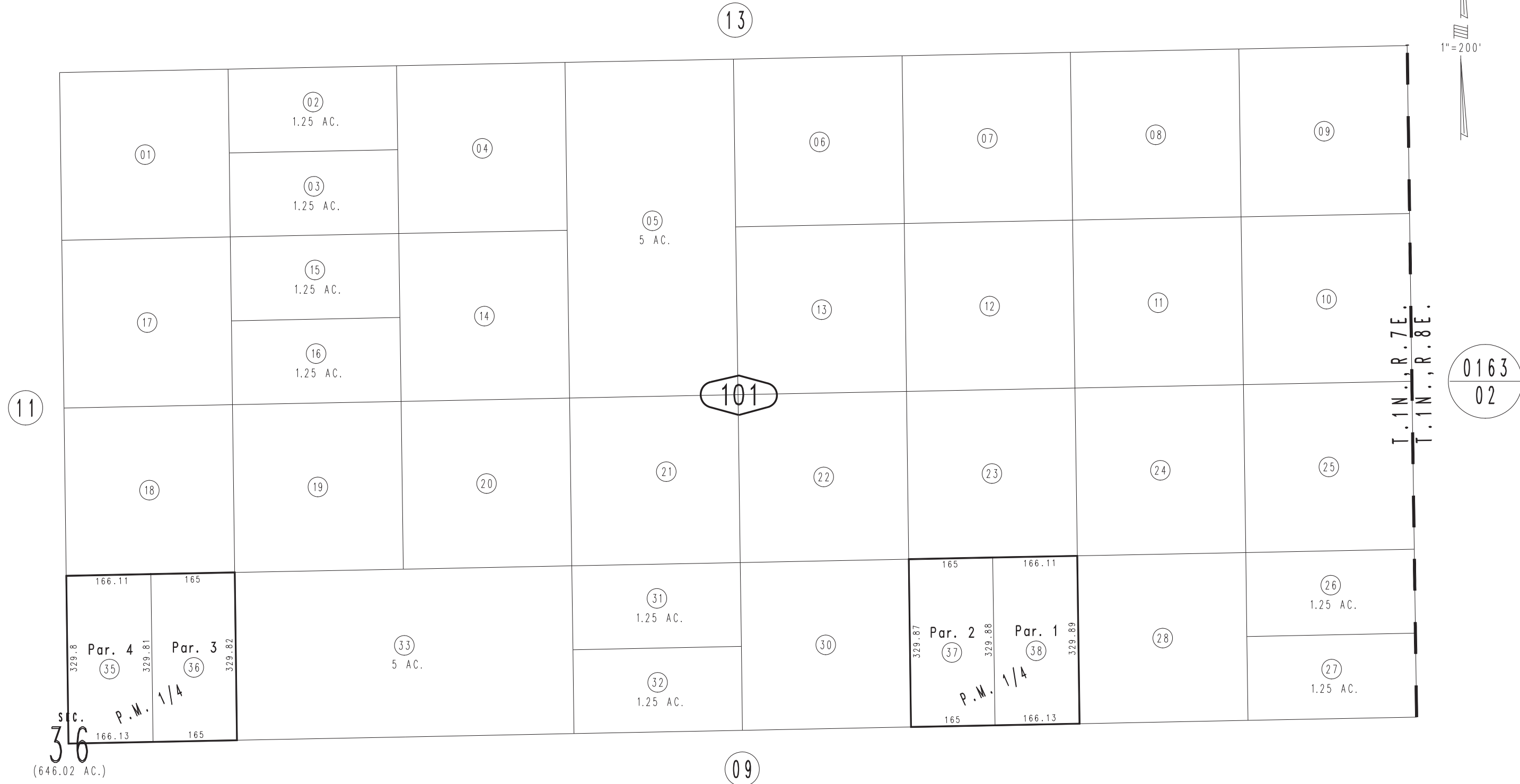


THIS MAP IS FOR THE PURPOSE
OF AD VALOREM TAXATION ONLY.

S.1/2, N.E.1/4 Fractional Sec.36, T.1N.,R.7E., S.B.B.&M.

Morongo Unified
Tax Rate Area
94004

0608-10



166.11 165
 329.8 Par. 4 329.81
 166.13 35 165
 P.M. 1/4
 329.82 Par. 3 329.82
 36
 S.C. 36
 (646.02 AC.)

165 166.11
 329.87 Par. 2 329.88
 165 37 166.13
 P.M. 1/4
 329.89 Par. 1 329.89
 38