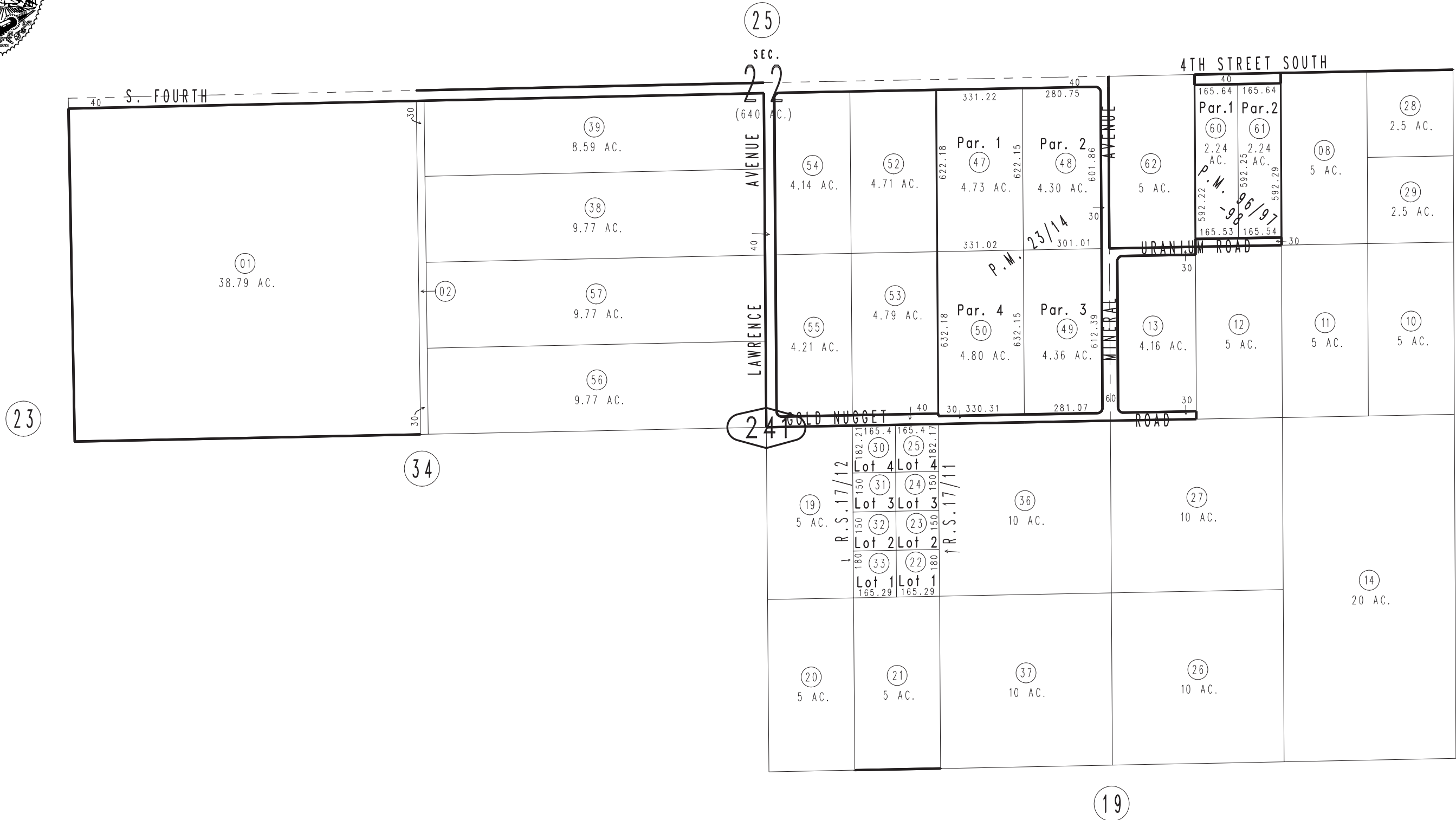


THIS MAP IS FOR THE PURPOSE
OF AD VALOREM TAXATION ONLY.

Ptn. S.1/2, Sec.22, T.1N.,R.7E., S.B.B.&M.

Morongo Unified
Tax Rate Area
94004

0607-24



March 2005

Parcel Map No. 8679, P.M. 96/97-98
Parcel Map No. 2666, P.M. 23/14
R.S. 17/11
R.S. 17/12

Assessor's Map
Book 0607 Page 24
San Bernardino County

REVISED
07/19/16 KC