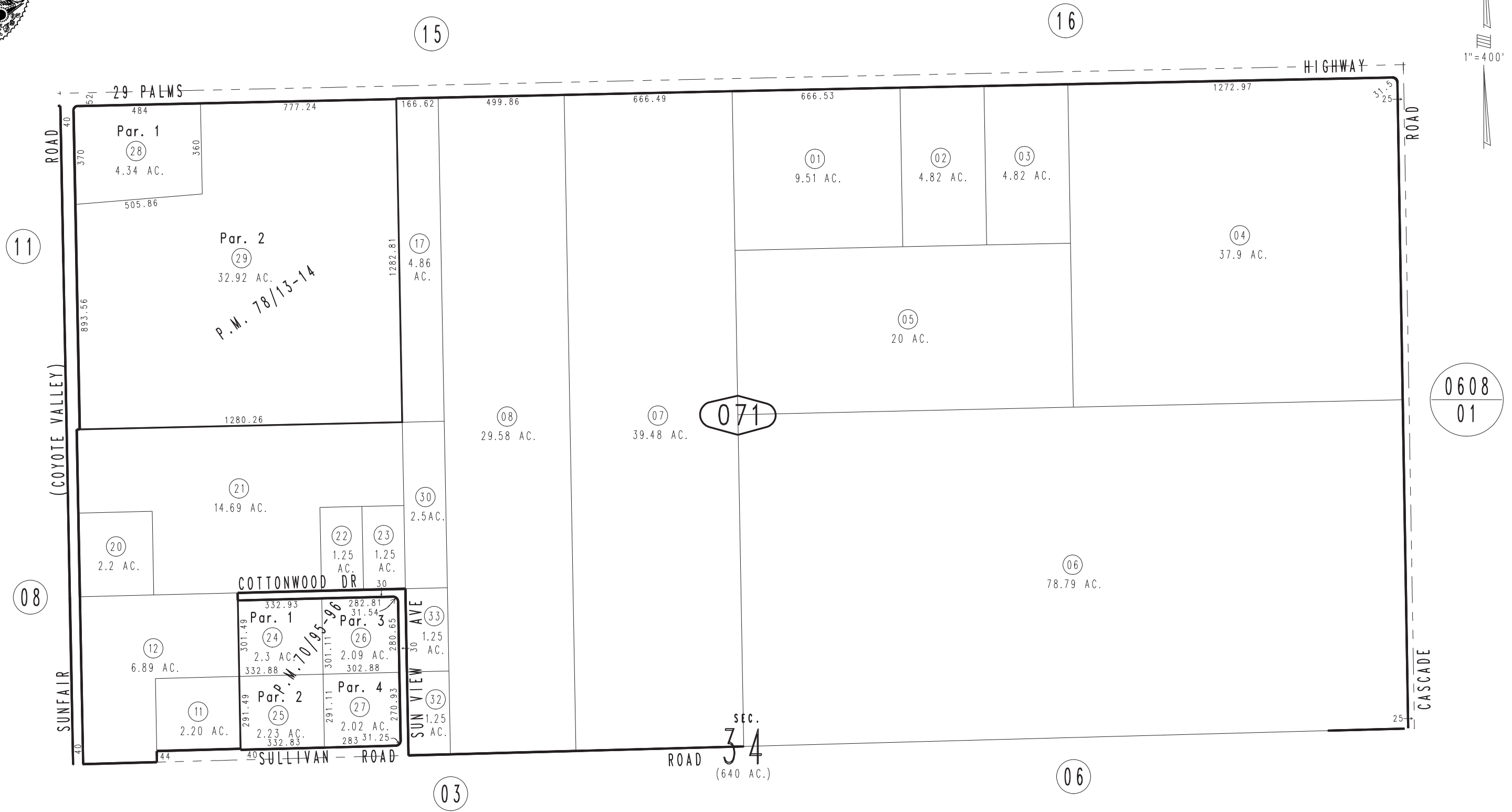


THIS MAP IS FOR THE PURPOSE OF AD VALOREM TAXATION ONLY.

N.1/2, Sec.34, T.1N.,R.7E., S.B.B.&M.

Morongo Unified Tax Rate Area 94004

0607-07



March 2005

Parcel Map No. 7369, P.M. 78/13-14
Parcel Map No. 6825, P.M. 70/95-96

Assessor's Map
Book 0607 Page 07
San Bernardino County

REVISED
03/24/23 JH