

THIS MAP IS FOR THE PURPOSE
OF AD VALOREM TAXATION ONLY.

N.1/2 Sec.3, T.1N.,R.7E., S.B.B.&M.

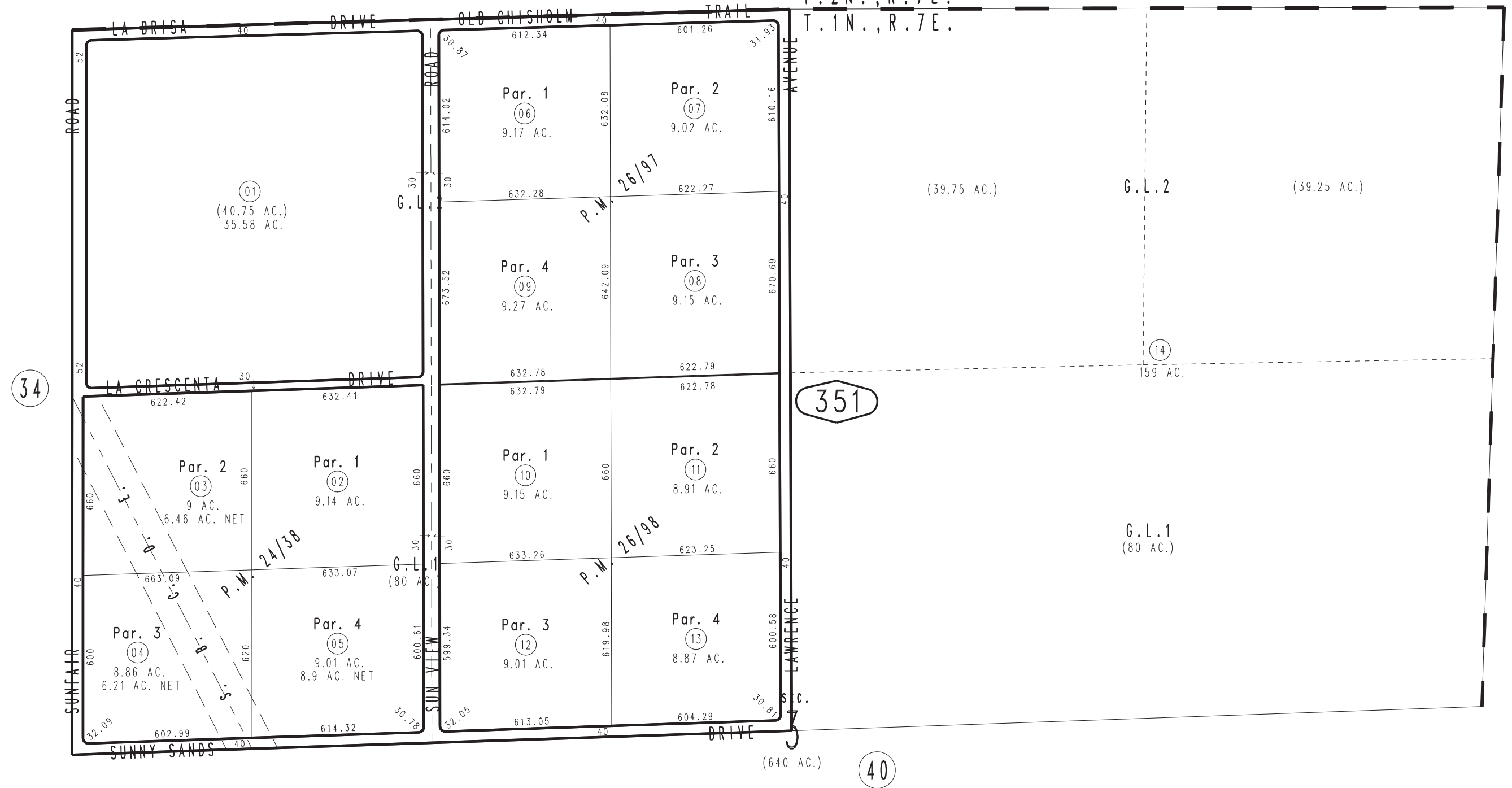
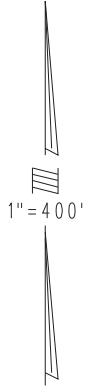
Morongo Unified
Tax Rate Area
94107

0606 - 35



0632
10

T.2N.,R.7E.
T.1N.,R.7E.



Parcel Map No. 2942, P.M. 26/98
Parcel Map No. 2941, P.M. 26/97
Parcel Map No. 2727, P.M. 24/38

March 2005

Assessor's Map
Book 0606 Page 35
San Bernardino County

REVISED
06/06/13 LH