

THIS MAP IS FOR THE PURPOSE OF AD VALOREM TAXATION ONLY.

# S.1/2 Fractional Sec.5, T.1N.,R.7E., S.B.B.&M.

Morongo Unified  
Tax Rate Area  
94107

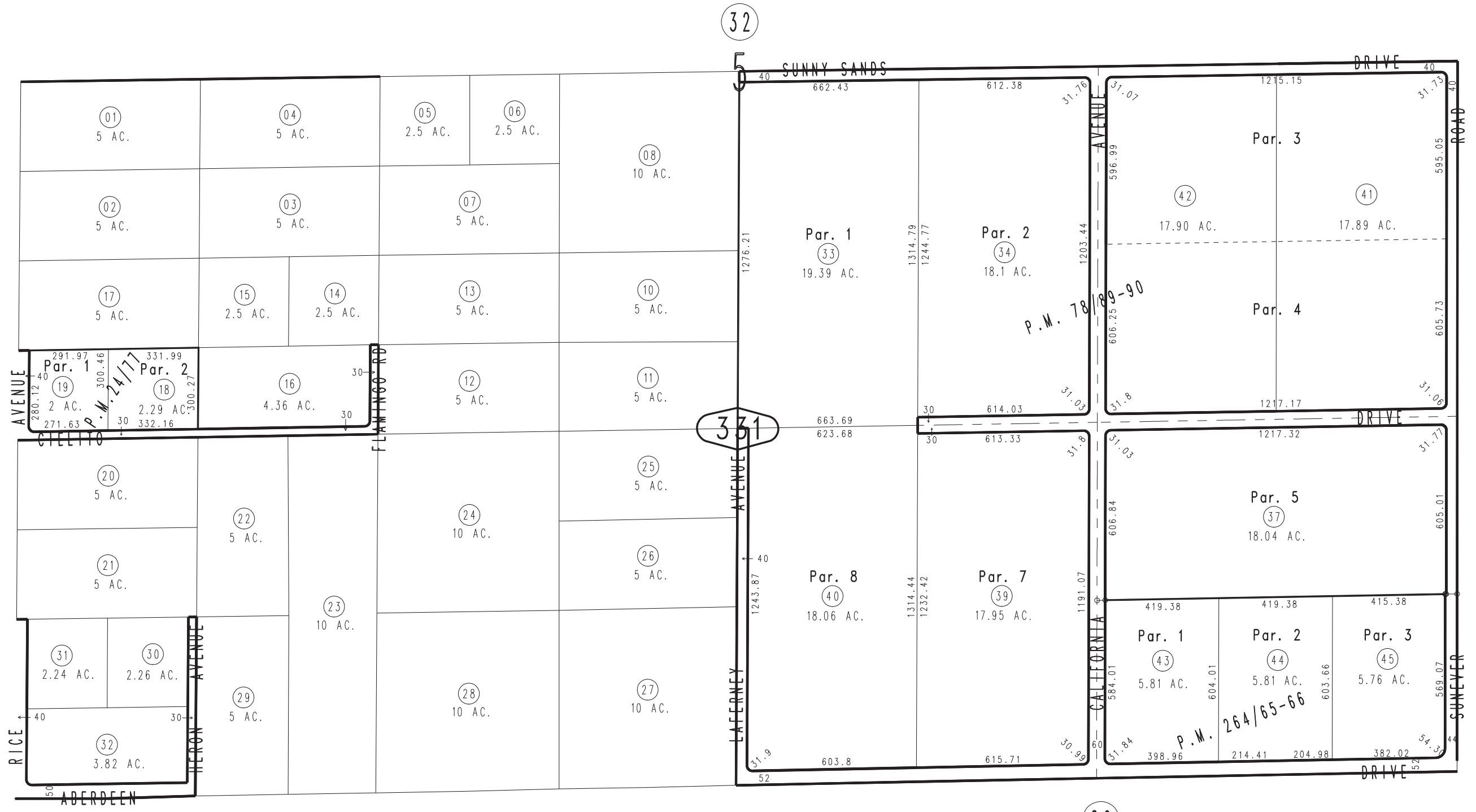
0606 - 33



0605  
29

0605  
28

30



28

29

March 2005

Parcel Map No. 20366, 264/65-66  
Ptn. Parcel Map No. 7792, P.M. 78/89-90  
Parcel Map No. 2774, P.M. 24/77

Assessor's Map  
Book 0606 Page 33  
San Bernardino County

REVISED  
03/14/25 KA