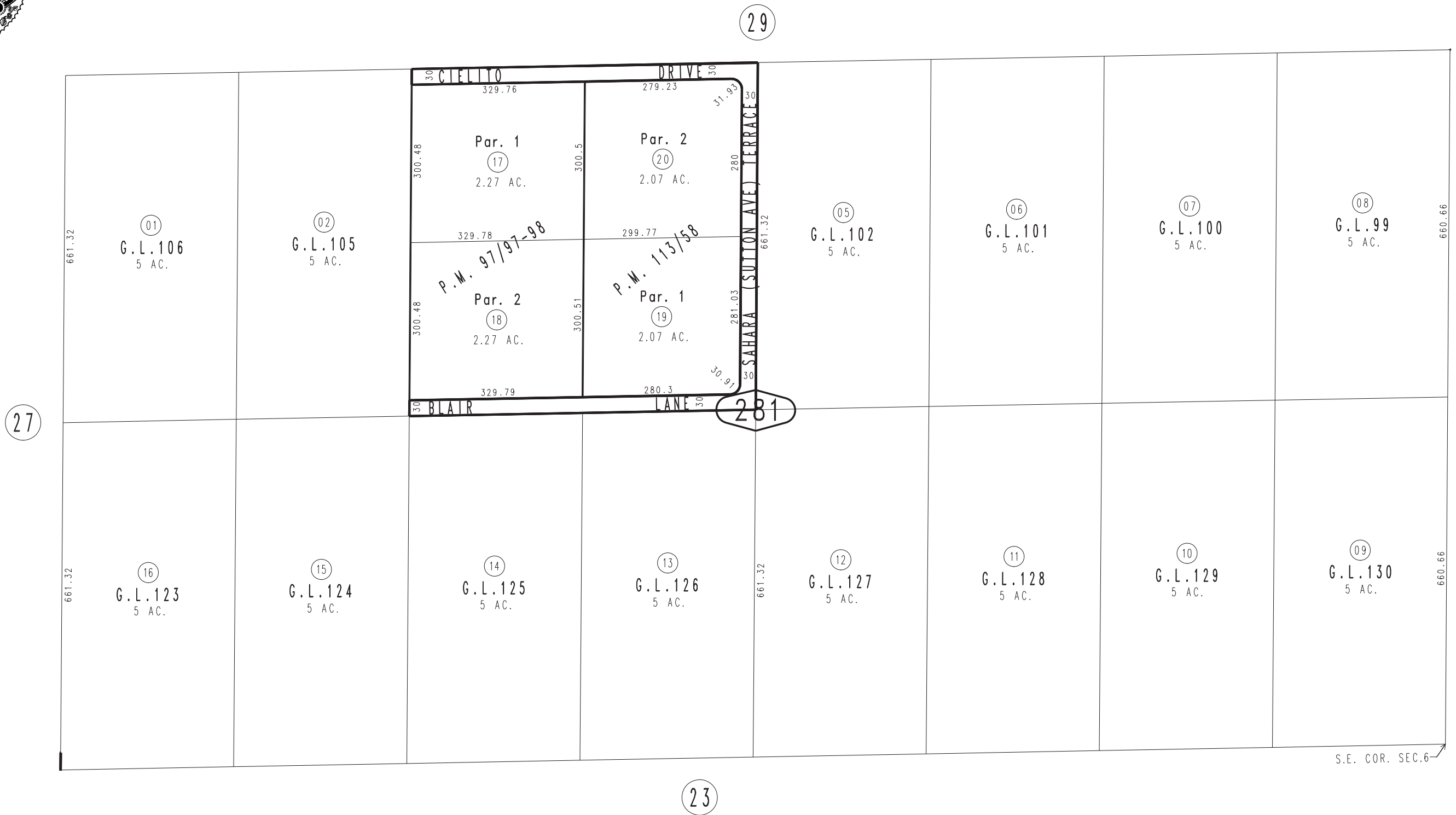


THIS MAP IS FOR THE PURPOSE
OF AD VALOREM TAXATION ONLY.

S.1/2, S.E.1/4 Fractional Sec.6, T.1N.,R.7E., S.B.B.&M.

Morongo Unified
Tax Rate Area
94107

0605-28



April 2005

Parcel Map No. 9347, P.M. 113/58
Parcel Map No. 9042, P.M. 97/97-98

Assessor's Map
Book 0605 Page 28
San Bernardino County

REVISED
05/20/13 LH