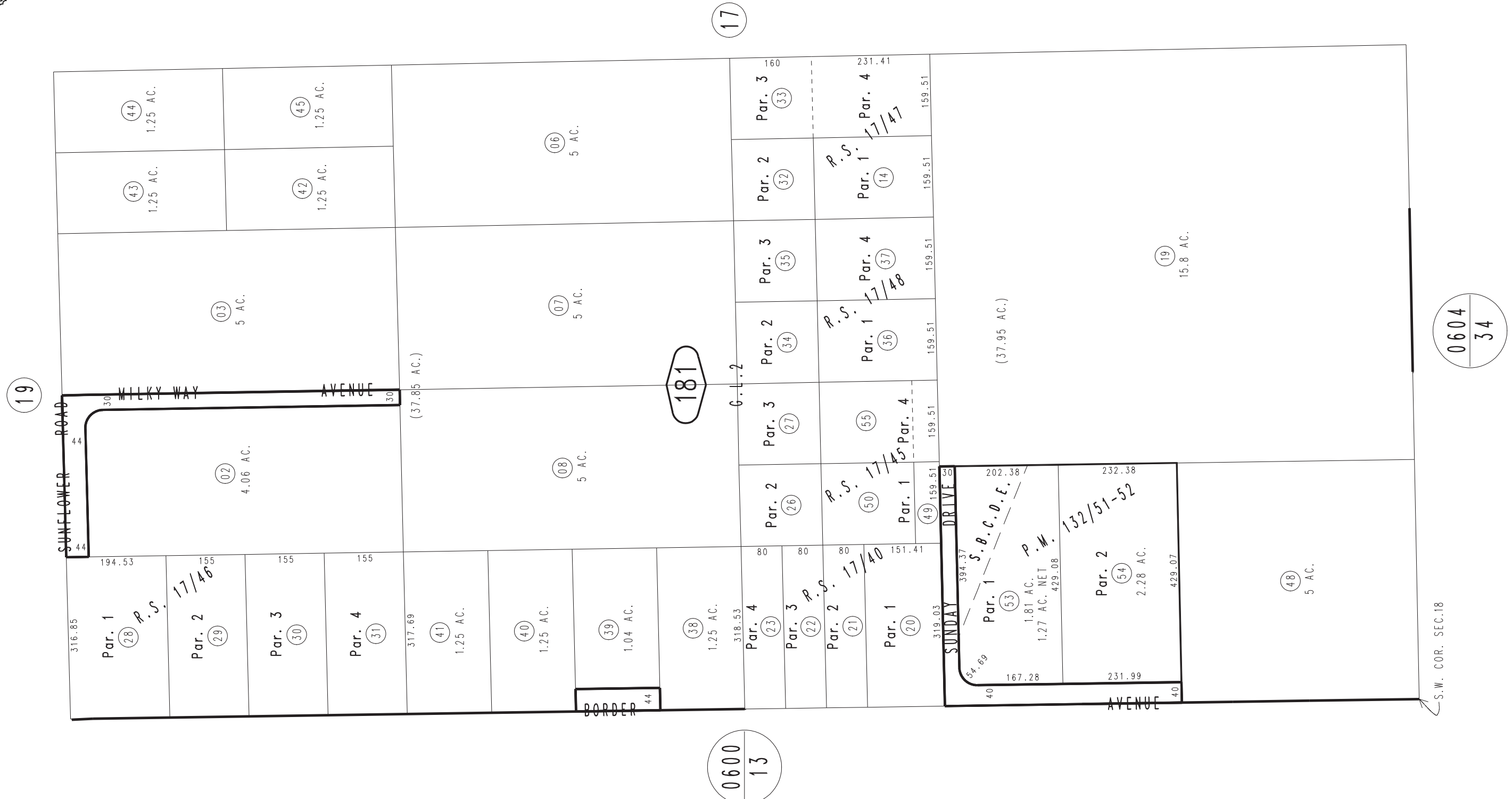
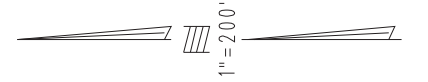


THIS MAP IS FOR THE PURPOSE OF AD VALOREM TAXATION ONLY.

W.1/2, S.W.1/4 Fractional Sec.18, T.1N.,R.7E., S.B.B.&M.

Morongo Unified
Tax Rate Area
94004

0605-18



R.S. 17/40
 R.S. 17/45
 R.S. 17/46
 R.S. 17/47
 R.S. 17/48

Parcel Map No. 11622, P.M. 132/51-52

April 2005

Assessor's Map
 Book 0605 Page 18
 San Bernardino County

REVISED
 10/25/22 KA
 05/14/24 CA