

THIS MAP IS FOR THE PURPOSE OF AD VALOREM TAXATION ONLY.

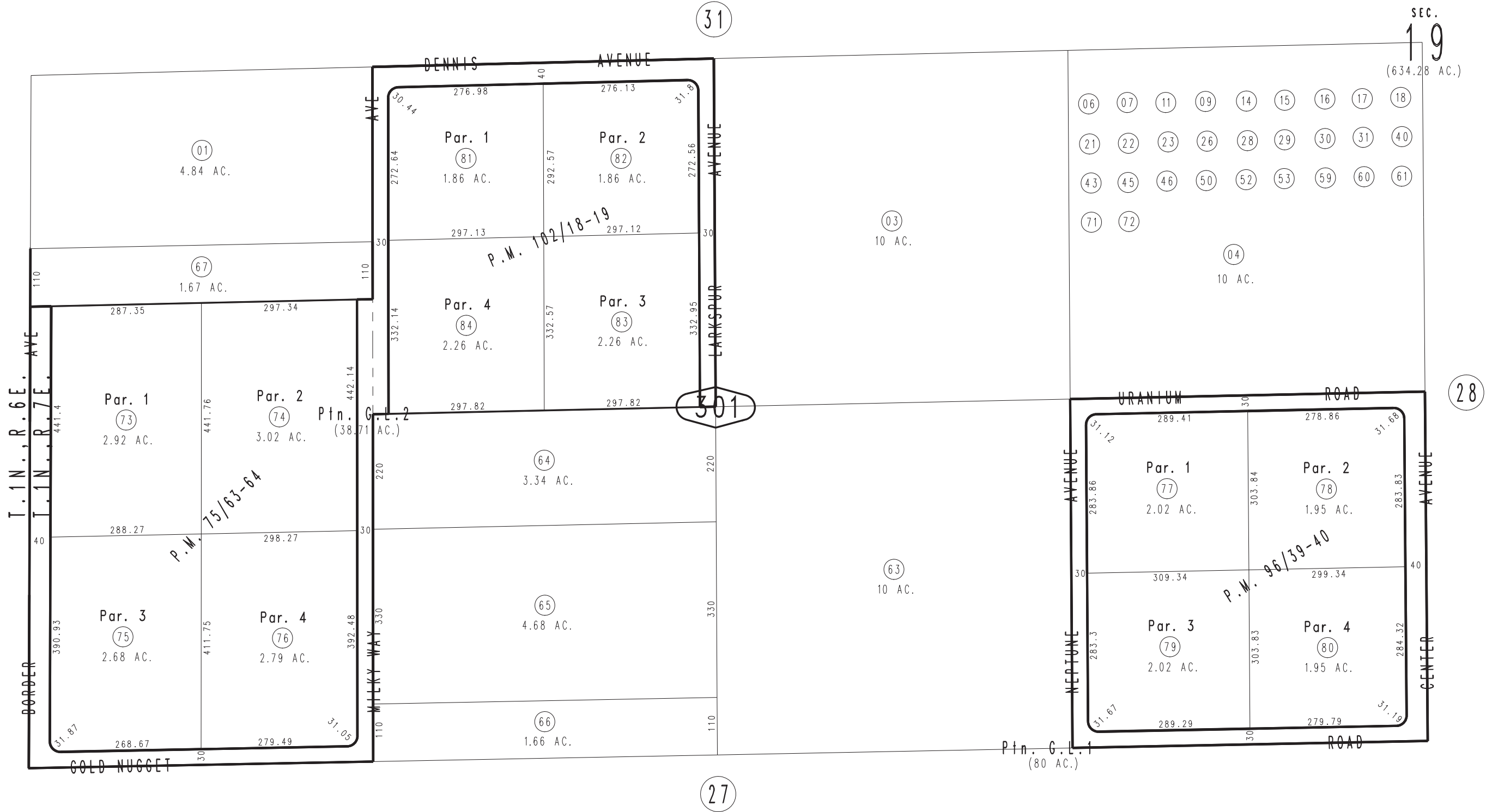
N.1/2, S.W.1/4 Fractional Sec.19, T.1N.,R.7E., S.B.B.&M.

Morongo Unified
Tax Rate Area
94004

0604-30



0600
25



Parcel Map No. 8820, P.M. 102/18-19
 Parcel Map No. 8843, P.M. 96/39-40
 Parcel Map No. 7486, P.M. 75/63-64

March 2005

Assessor's Map
 Book 0604 Page 30
 San Bernardino County

REVISED
 04/23/13 LH-MC