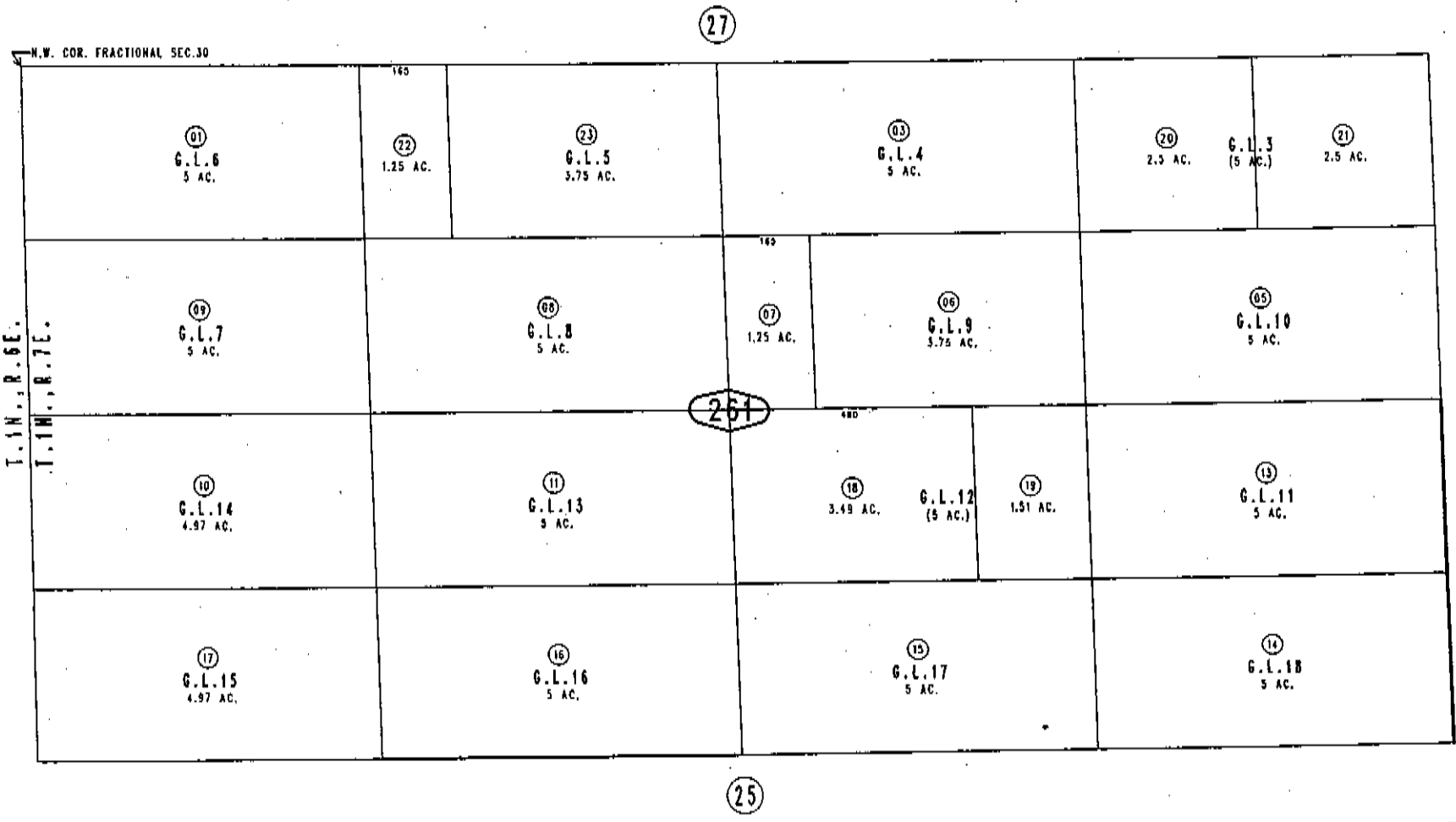
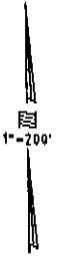


THIS MAP IS FOR THE PURPOSE
OF AD VALOREM TAXATION ONLY.

N.1/2, N.W.1/4 Fractional Sec.30, T.1N.,R.7E., S.B.B.&M.

Morongo Unified
Tax Rate Area
94004

0604-26



0603
18

March 2005

Assessor's Map
Book 0604 Page 26
San Bernardino County

REVISED