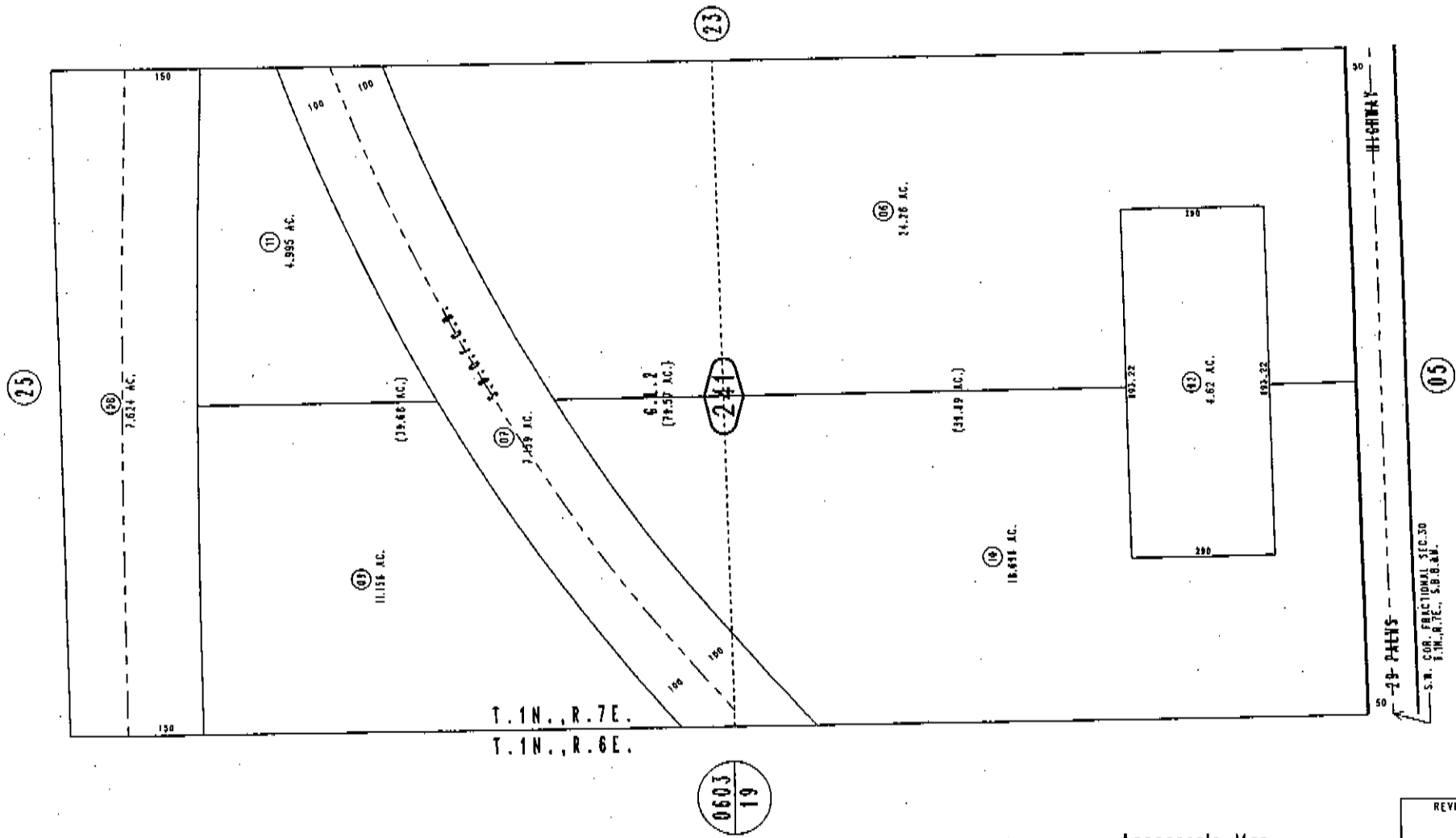
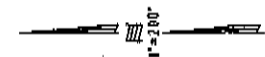


THIS MAP IS FOR THE PURPOSE
OF AD VALOREM TAXATION ONLY.

W.1/2, S.W.1/4, Fractional Sec.30, T.1N.,R.7E., S.B.B.&M.

Morongo Unified
Tax Rate Area
94004

0604-24



March 2005

Assessor's Map
Book 0604 Page 24
San Bernardino County

REVISED