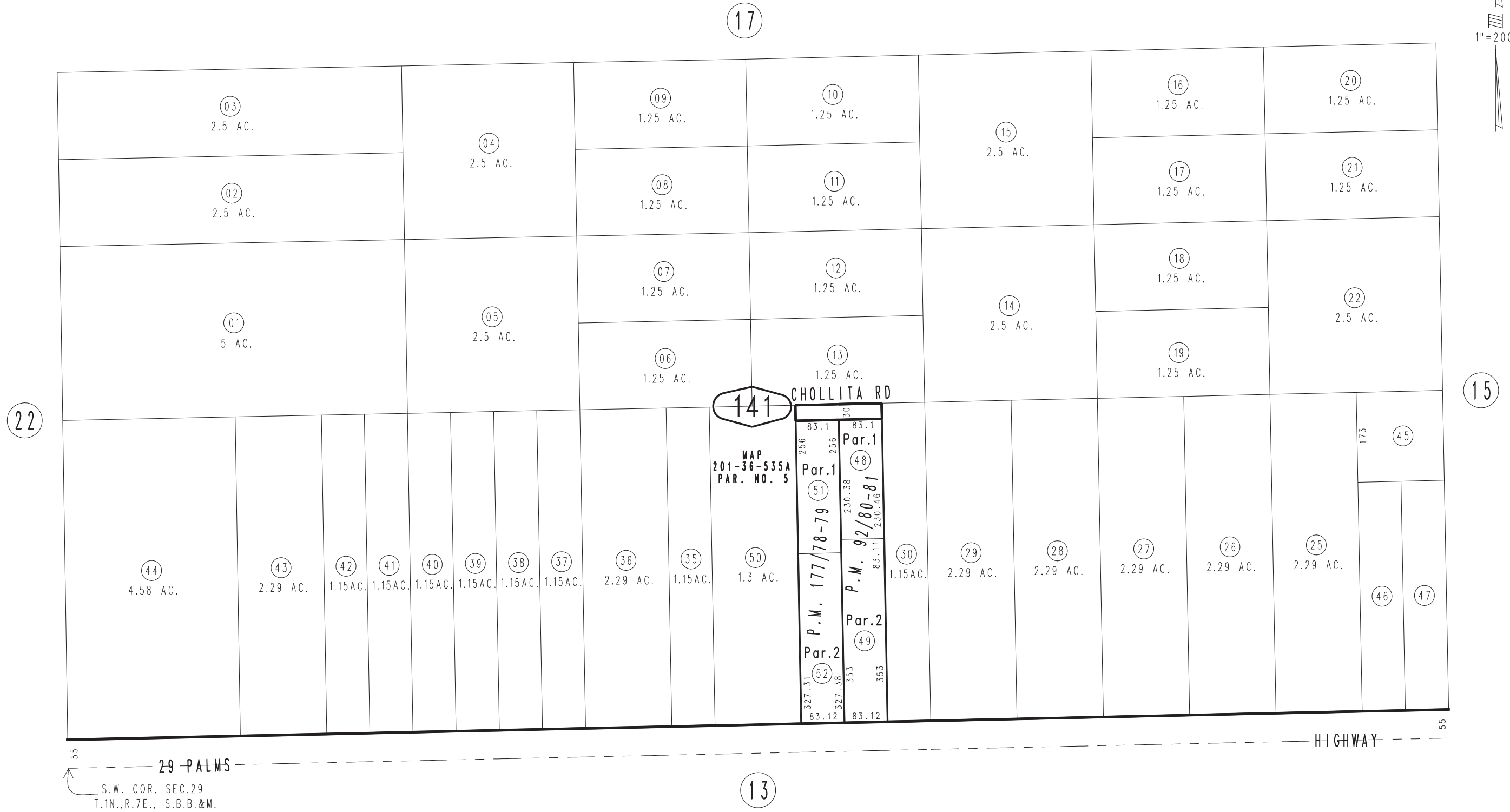


THIS MAP IS FOR THE PURPOSE
OF AD VALOREM TAXATION ONLY.

S.1/2, S.W.1/4 Sec.29, T.1N.,R.7E., S.B.B.&M.

Morongo Unified
Tax Rate Area
94004

0604-14



March 2005

Parcel Map No. 12654, P.M. 177/78-79
Parcel Map No. 8347, P.M. 92/80-81

Assessor's Map
Book 0604 Page 14
San Bernardino County

REVISED
04/23/13 LH-MC