

THIS MAP IS FOR THE PURPOSE OF AD VALOREM TAXATION ONLY.

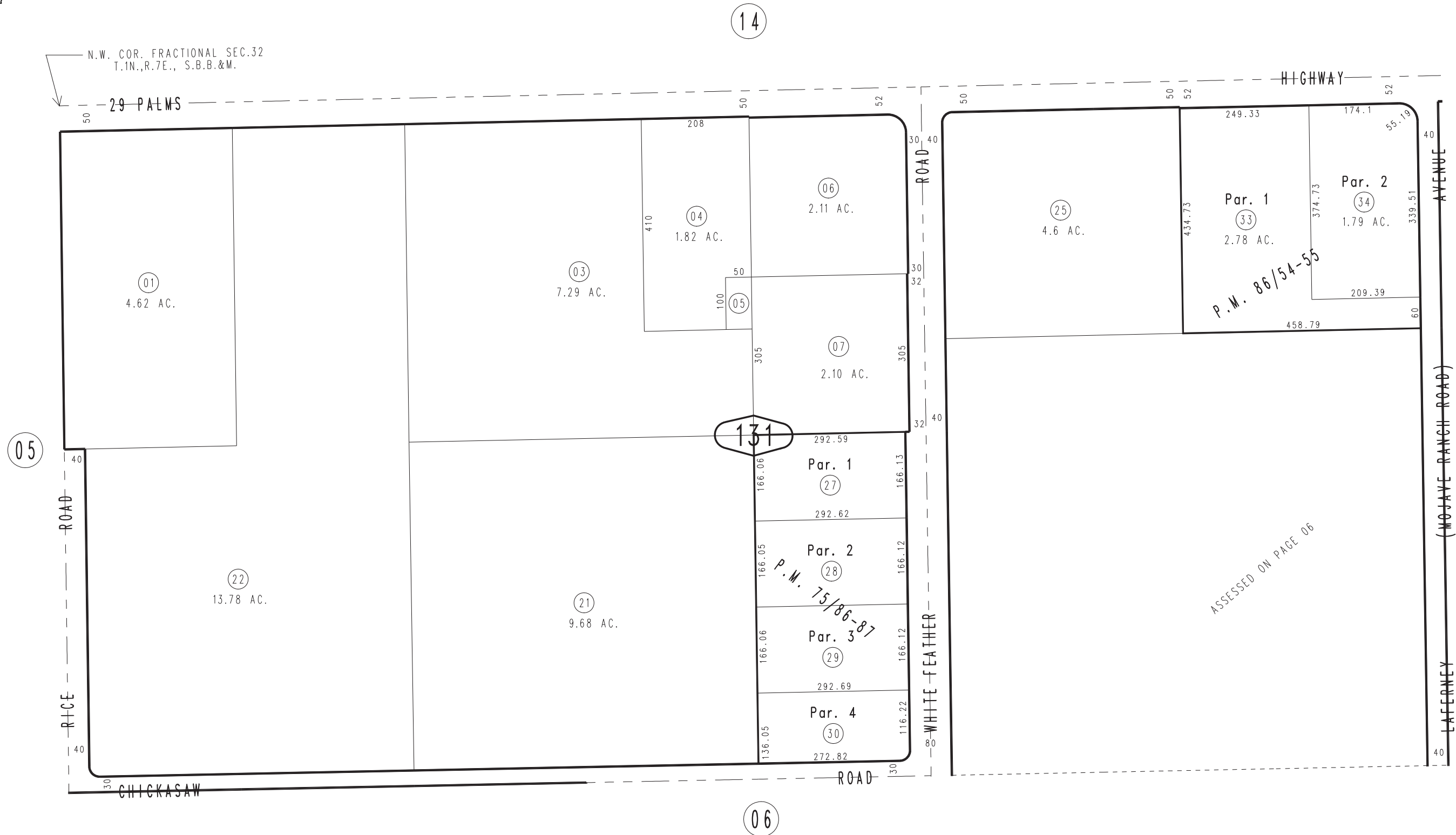
# N.1/2, N.W.1/4 Fractional Sec.32, T.1N.,R.7E., S.B.B.&M.

Morongo Unified  
Tax Rate Area  
94004

0604-13



N.W. COR. FRACTIONAL SEC.32  
T.1N.,R.7E., S.B.B.&M.



March 2005

Parcel Map No. 8390, P.M. 86/54-55  
Parcel Map No. 7490, P.M. 75/86-87

Assessor's Map  
Book 0604 Page 13  
San Bernardino County

REVISED  
04/30/13 LH