

THIS MAP IS FOR THE PURPOSE OF AD VALOREM TAXATION ONLY.

# E.1/2, N.E.1/4 Fractional Sec.32, T.1N.,R.7E., S.B.B.&M.

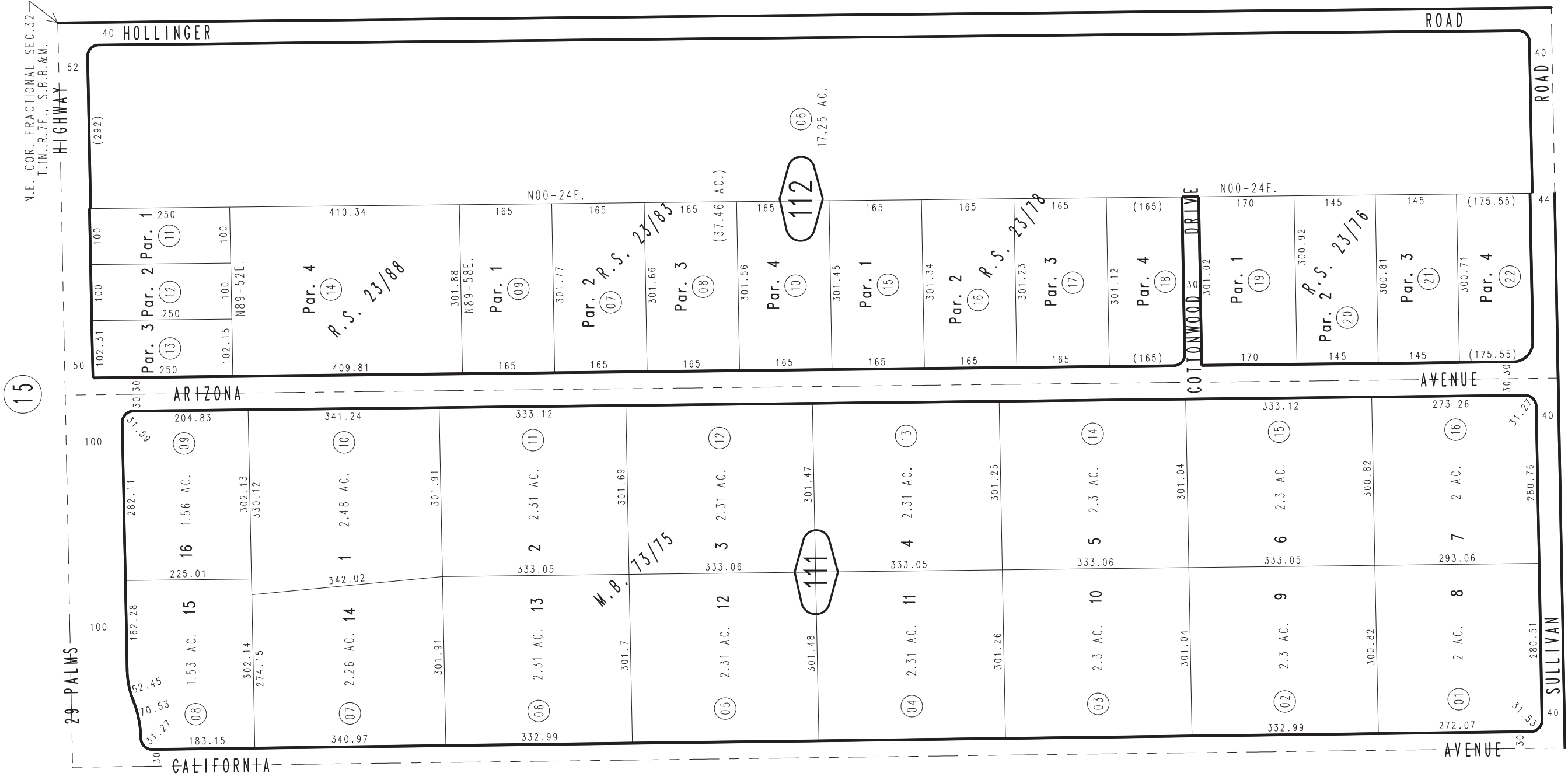
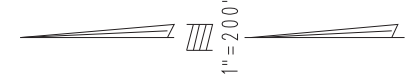
Morongo Unified  
Tax Rate Area  
94004

0604-11



0607  
10

0607  
09



15

10

12

Marion Hills, Tract No. 5805, M.B. 73/75  
 R.S. 23/88  
 R.S. 23/83  
 R.S. 23/78  
 R.S. 23/76

March 2005

Assessor's Map  
 Book 0604 Page 11  
 San Bernardino County

REVISED  
 01/13/22 KA  
 01/31/23 KA