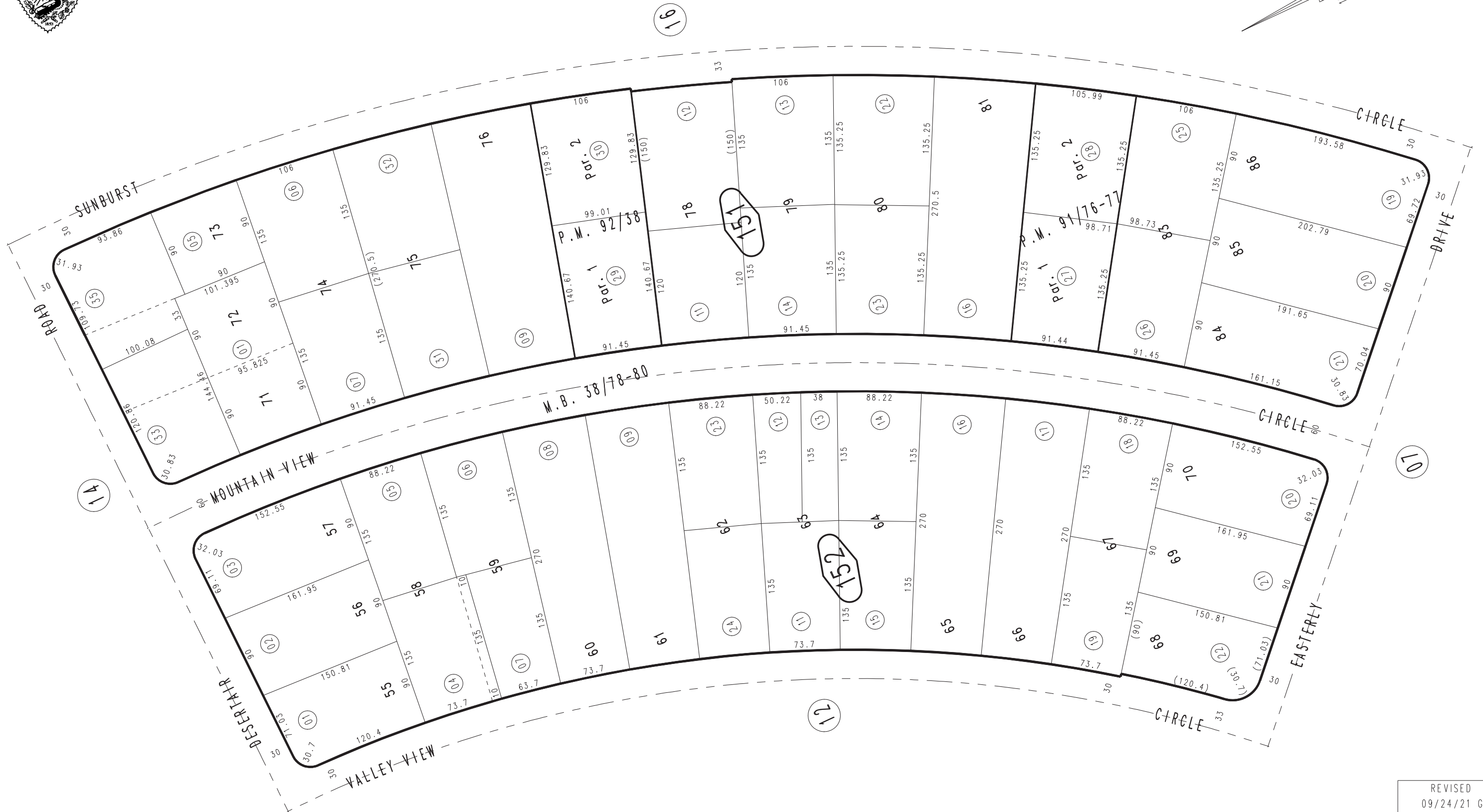
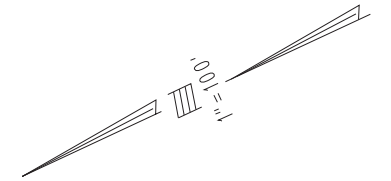


THIS MAP IS FOR THE PURPOSE
OF AD VALOREM TAXATION ONLY.

Ptn. Tract No. 2738, M.B. 38/78-80

Morongo Unified
Tax Rate Area
94004

0603-15



March 2005

Parcel Map No. 8660, P.M. 92/38
Parcel Map No. 8886, P.M. 91/76-77

Ptn. N.1/2, Sec. 36
T.1N., R.6E.

Assessor's Map
Book 0603 Page 15
San Bernardino County

REVISED
09/24/21 GW