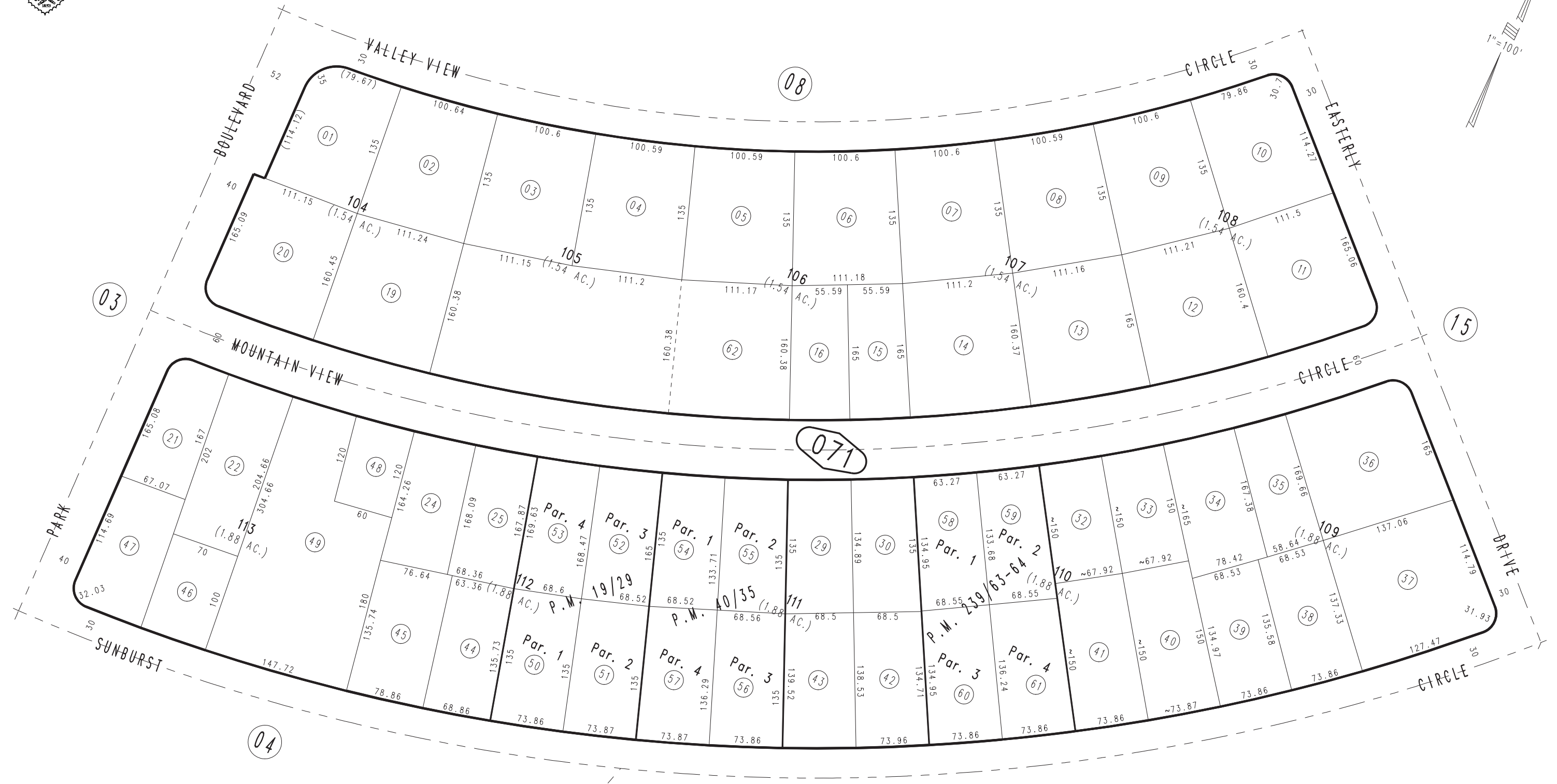
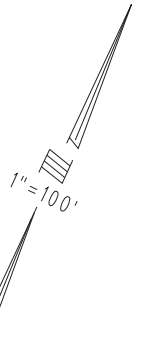


THIS MAP IS FOR THE PURPOSE OF AD VALOREM TAXATION ONLY.

Ptn. Tract No. 2556, M.B. 36/57-61

Morongo Unified
Tax Rate Area
94004

0603-07



March 2005

Parcel Map No. 17611, P.M. 239/63-64
Parcel Map No. 4440, P.M. 40/35
Parcel Map No. 2100, P.M. 19/29

Assessor's Map
Book 0603 Page 07
San Bernardino County

REVISED
10/22/18 KC