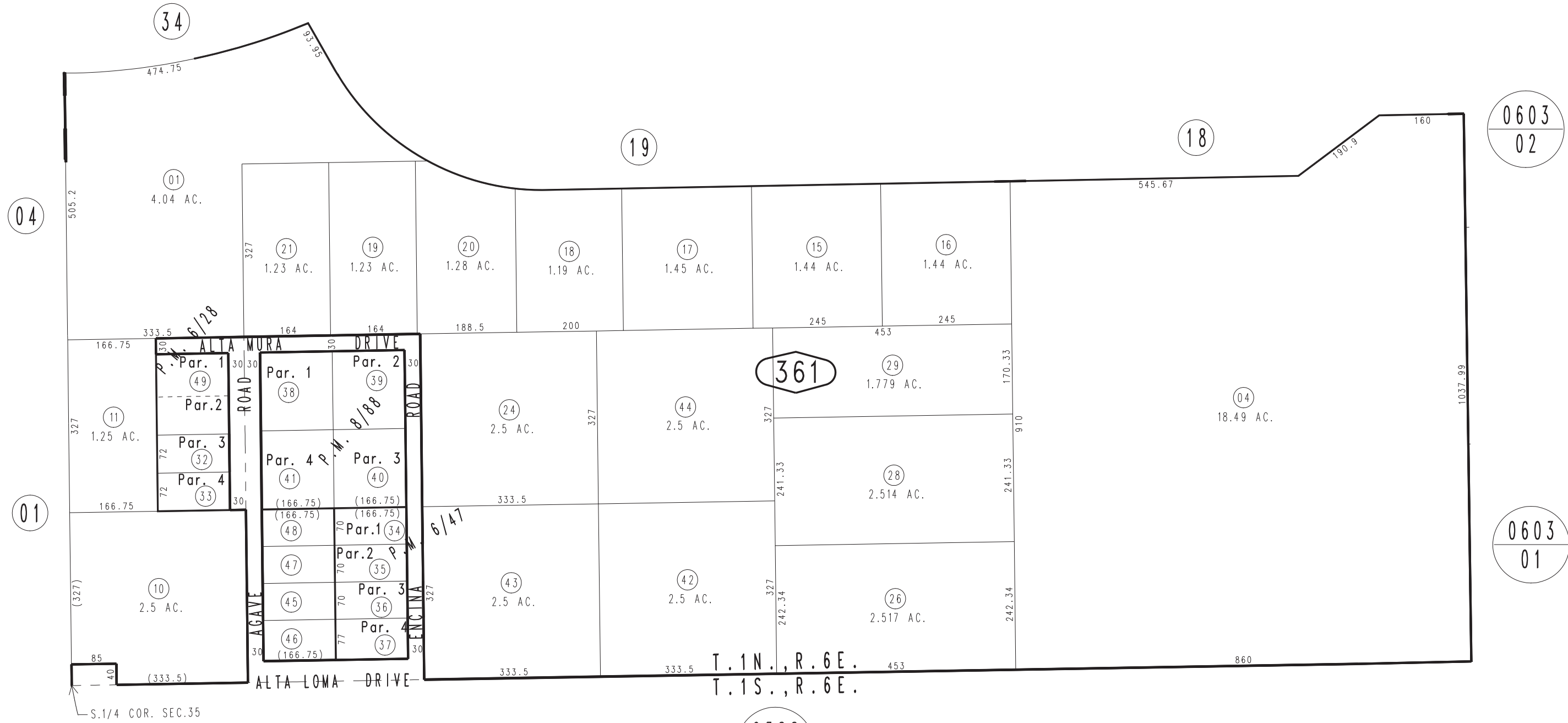


THIS MAP IS FOR THE PURPOSE  
OF AD VALOREM TAXATION ONLY.

Ptn. S.1/2, E.1/2, Sec.35, T.1N.,R.6E., S.B.B.&M.

Morongo Unified  
Tax Rate Area  
94004

0602-36



0588  
23

0603  
02

0603  
01

February 2005

Parcel Map No. 673, P.M. 6/47  
Parcel Map No. 646, P.M. 6/28  
Parcel Map No. 979, P.M. 8/88

Assessor's Map  
Book 0602 Page 36  
San Bernardino County

REVISED  
03/15/22 KC