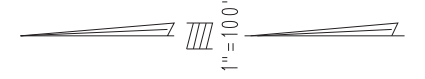


THIS MAP IS FOR THE PURPOSE OF AD VALOREM TAXATION ONLY.

Ptn. N.E.1/4 Sec.34, T.1N.,R.6E., S.B.B.&M.

Morongo Unified Tax Rate Area 94004

0601 - 42



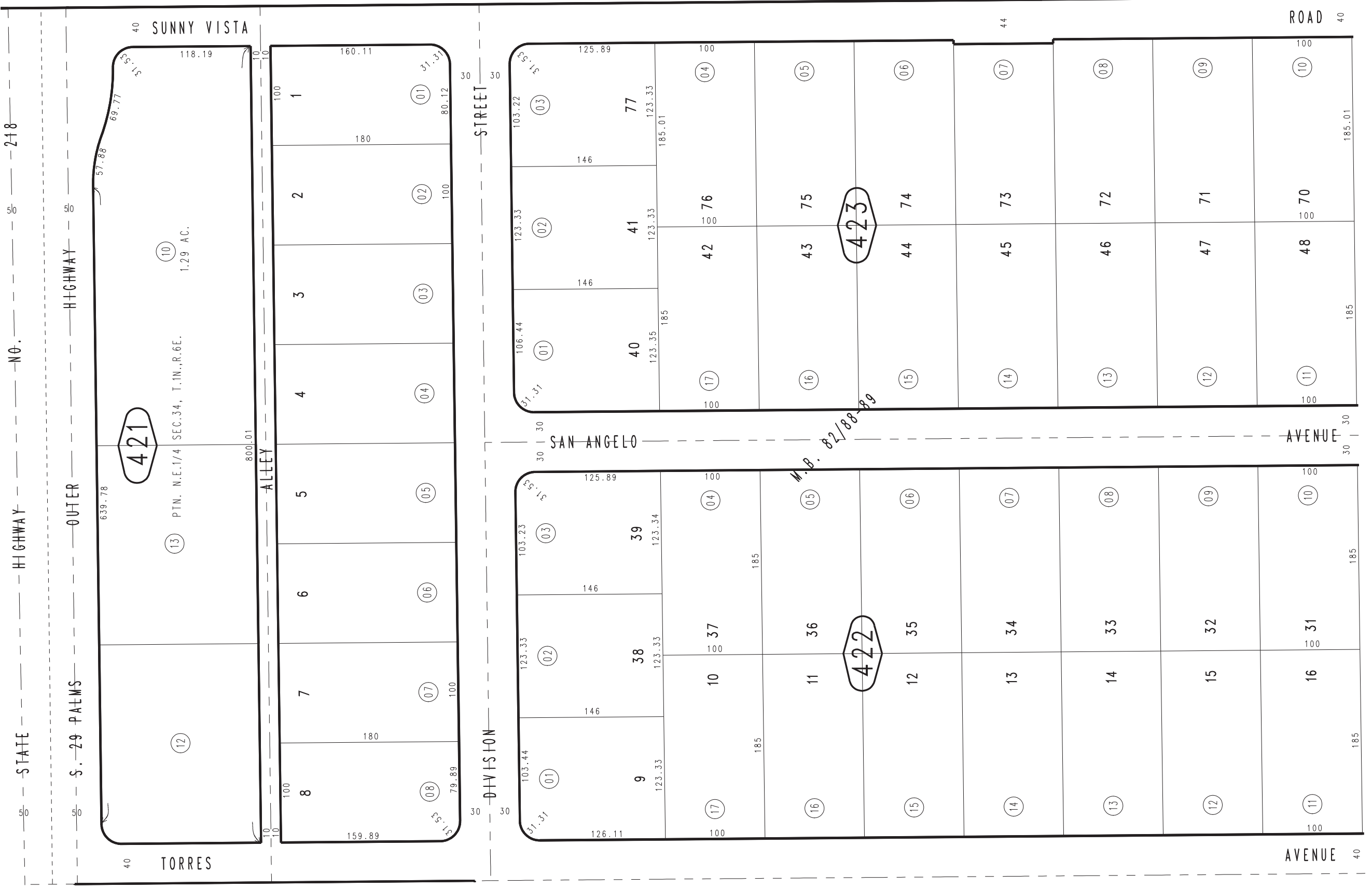
0602  
13

23

43

22

REVISED  
02/02/24 KA



Ptn. Tract No. 6339, M.B. 82/88-89

March 2005

Assessor's Map  
Book 0601 Page 42  
San Bernardino County