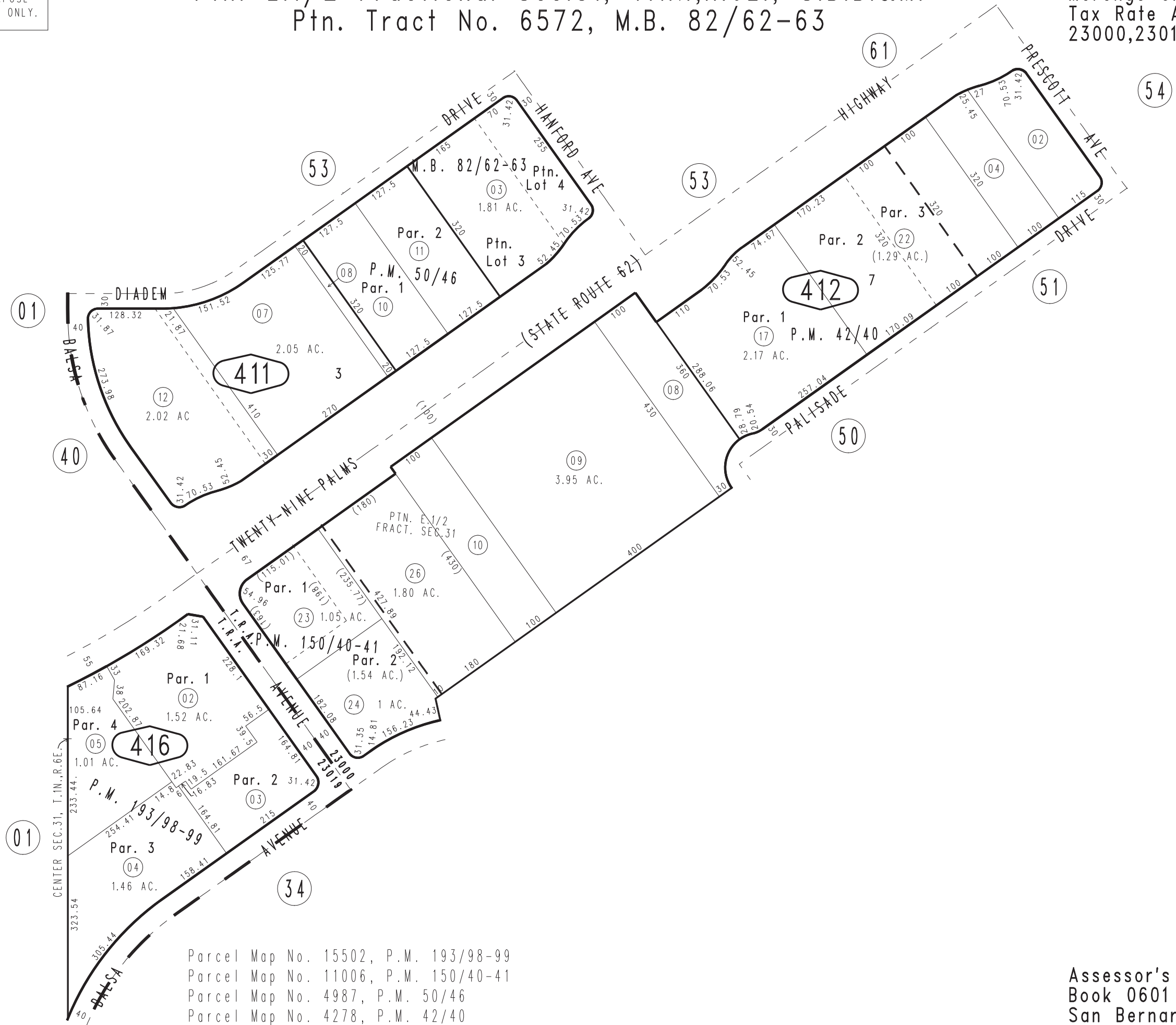


THIS MAP IS FOR THE PURPOSE
OF AD VALOREM TAXATION ONLY.

Ptn. E.1/2 Fractional Sec.31, T.1N.,R.6E., S.B.B.&M.
Ptn. Tract No. 6572, M.B. 82/62-63

Morongo Unified
Tax Rate Area
23000,23019

0601 - 41



Parcel Map No. 15502, P.M. 193/98-99
Parcel Map No. 11006, P.M. 150/40-41
Parcel Map No. 4987, P.M. 50/46
Parcel Map No. 4278, P.M. 42/40

Assessor's Map
Book 0601 Page 41
San Bernardino County

REVISED
12/15/15 KC

March 2005