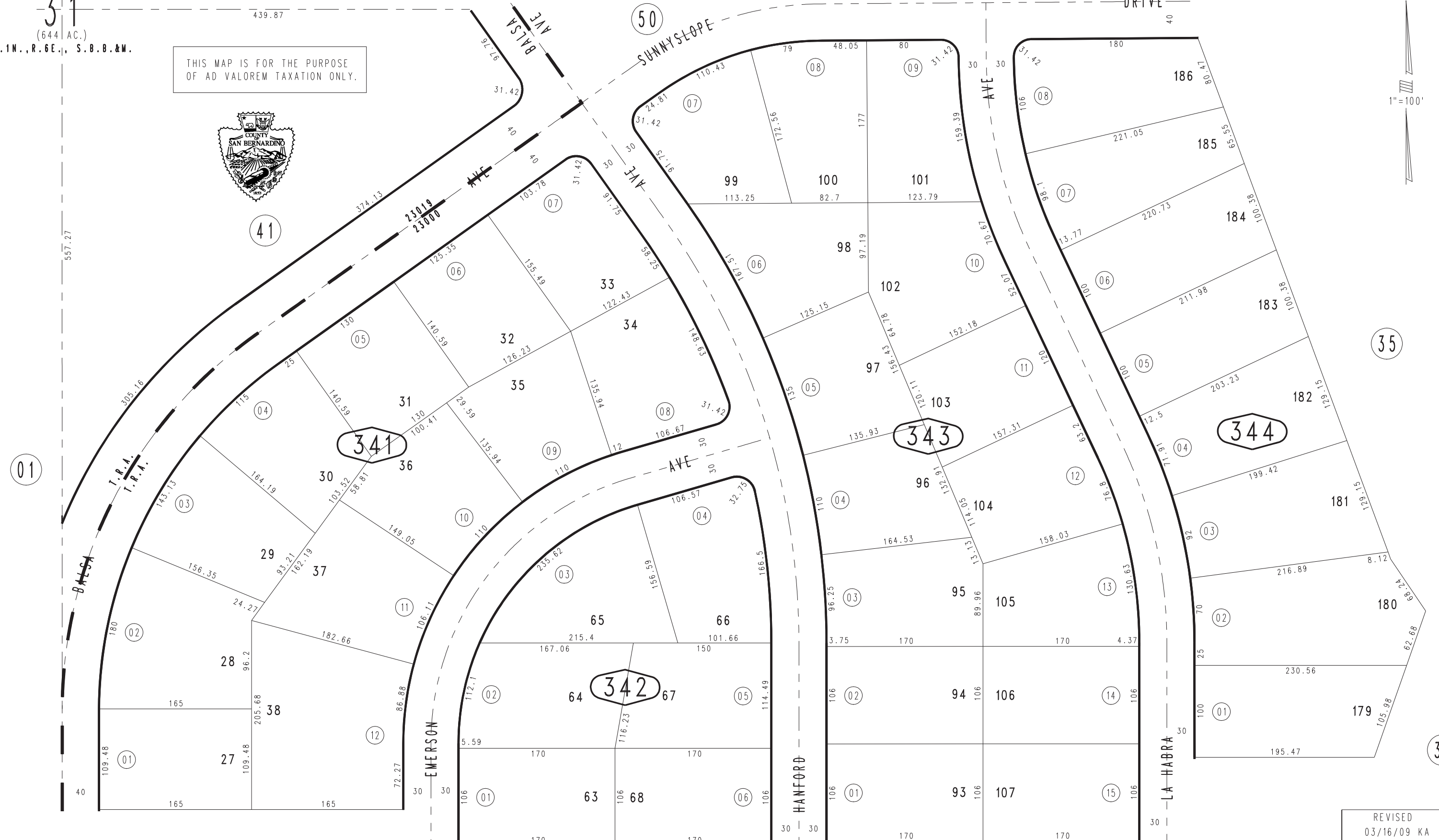
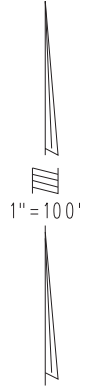


SEC. 31
(644 AC.)
T.1N., R.6E., S.B.B.&W.

THIS MAP IS FOR THE PURPOSE
OF AD VALOREM TAXATION ONLY.



Assessor's Map
Book 0601 Page 34
San Bernardino County

Ptn. S.E.1/4, Sec. 31
T.1N., R.6E.

REVISED
03/16/09 KA