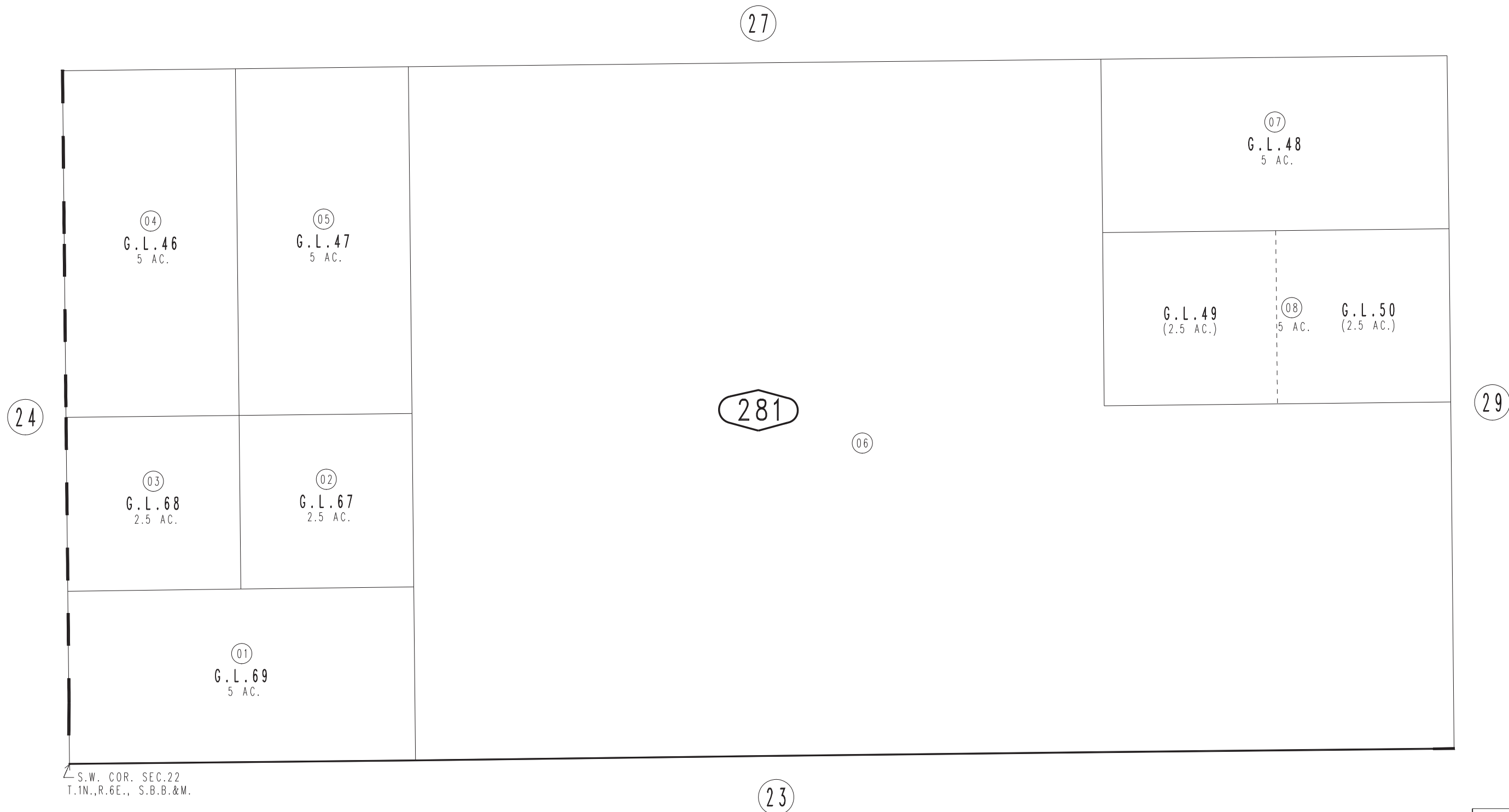
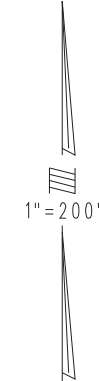


THIS MAP IS FOR THE PURPOSE
OF AD VALOREM TAXATION ONLY.

S.1/2, S.W.1/4 Sec.22, T.1N.,R.6E., S.B.B.&M.

Morongo Unified
Tax Rate Area
94004

0601 - 28



S.W. COR. SEC.22
T.1N.,R.6E., S.B.B.&M.

March 2005

Assessor's Map
Book 0601 Page 28
San Bernardino County

REVISED
03/16/09 KA