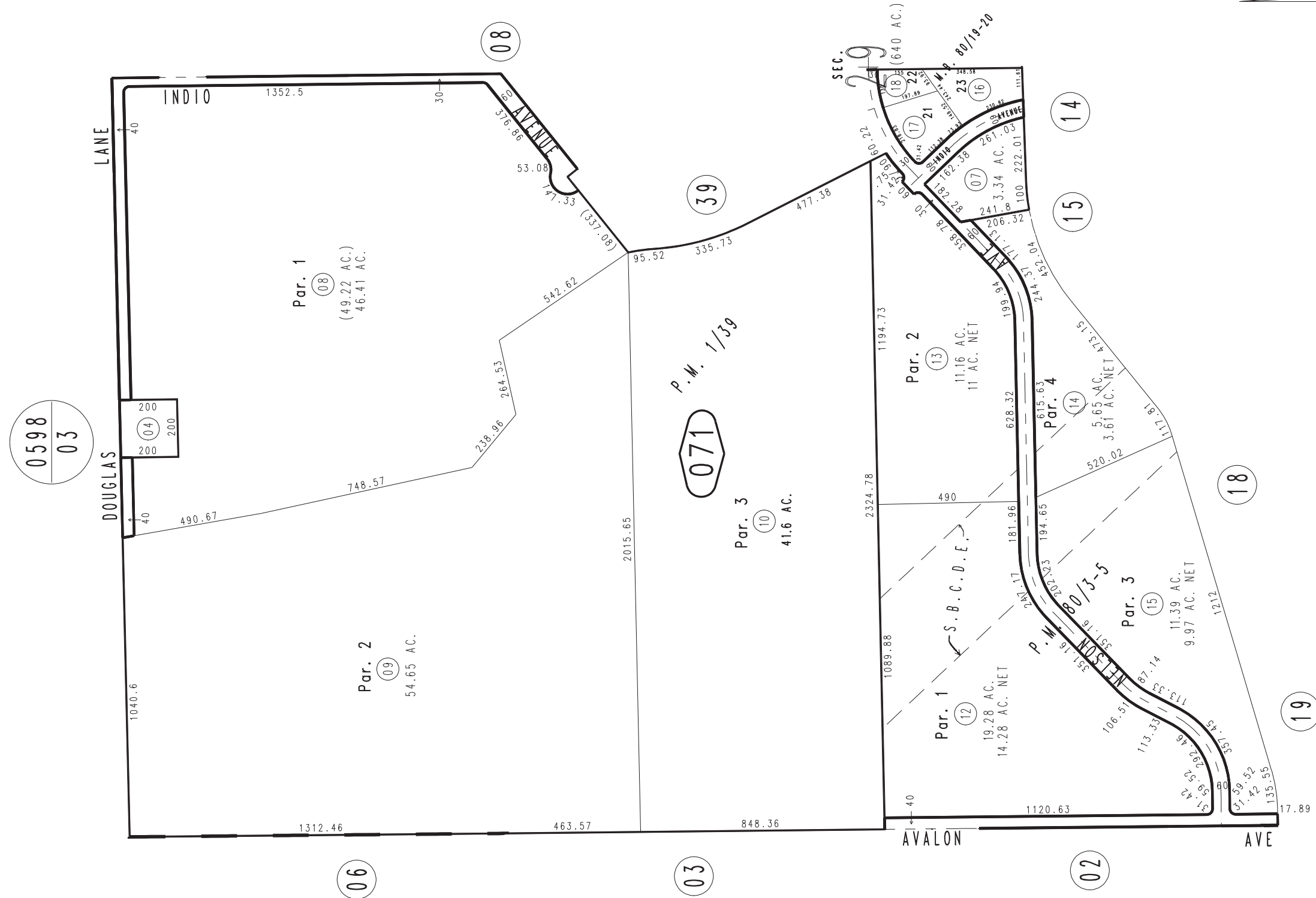
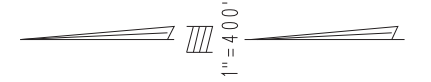


THIS MAP IS FOR THE PURPOSE
OF AD VALOREM TAXATION ONLY.

Ptn. W.1/2 Sec.29, T.1N.,R.6E., S.B.B.&M.

Town of Yucca Valley
Tax Rate Area
23007

0601 - 07



March 2005

Ptn. Tract No. 6068, M.B. 80/19-20
Parcel Map No. 7570, P.M. 80/3-5
Ptn. Parcel Map No. 42, P.M. 1/39

Assessor's Map
Book 0601 Page 07
San Bernardino County

REVISED
08/19/24 KC