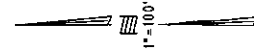


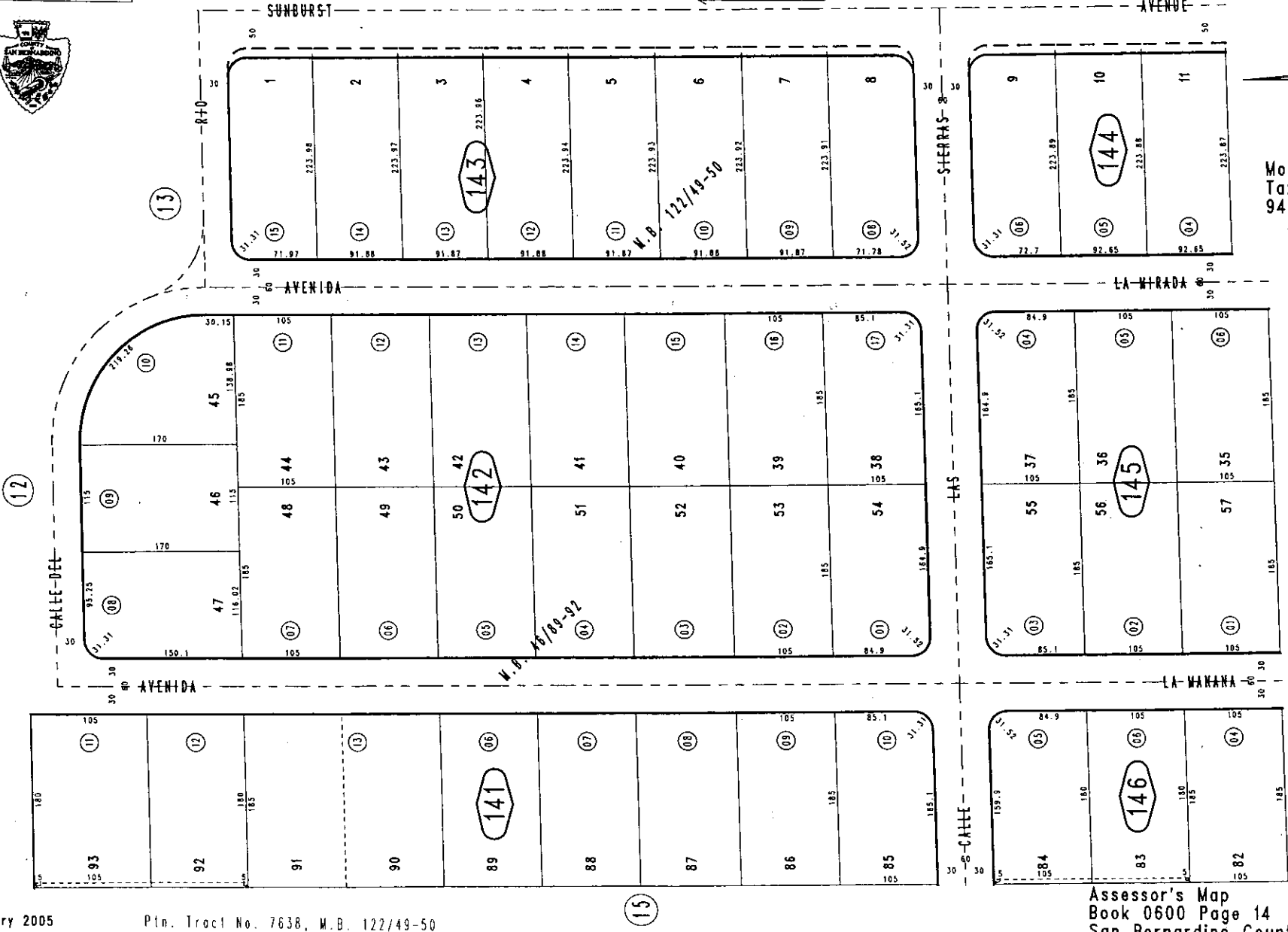
THIS MAP IS FOR THE PURPOSE OF AD VALOREM TAXATION ONLY.

Ptn. Tract No. 3491, M.B. 46/89-92

0600-14



Morongo Unified Tax Rate Area 94004



February 2005

Ptn. Tract No. 7638, M.B. 122/49-50

Assessor's Map Book 0600 Page 14 San Bernardino County

REVISED