

THIS MAP IS FOR THE PURPOSE OF AD VALOREM TAXATION ONLY.

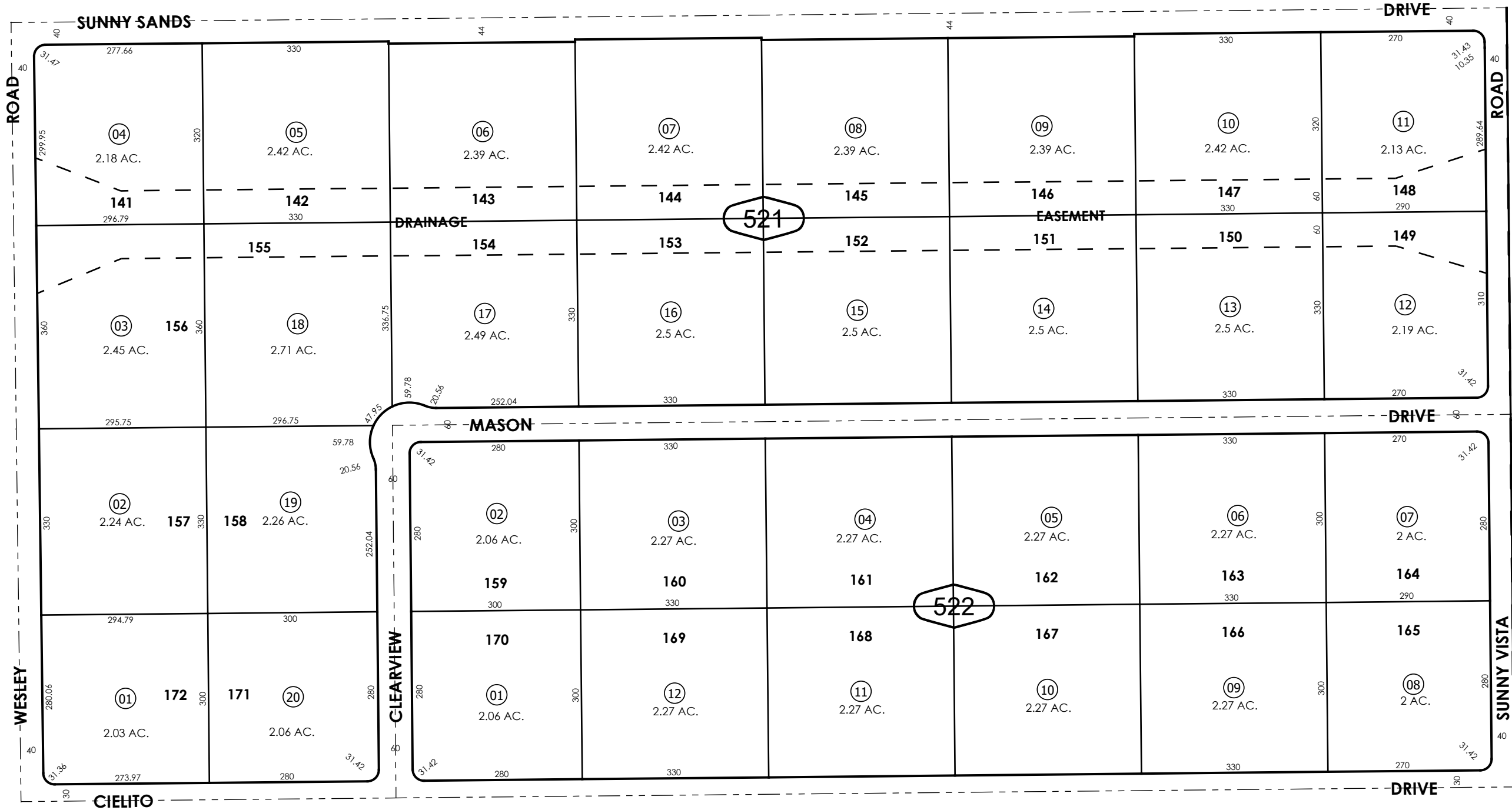
Ptn. Tract No. 7641, M.B. 97/46-60
Ptn. Amending Map, M.B. 149/83-97

Morongo Unified
Tax Rate Area
94044

0599 - 52



51



47

40

53

REVISED
06/06/25 XM

Ptn. N 1/2 SE 1/4,
Sec. 3
T.1N., R.6E.

Assessor's Map
Book 0599 Page 52
San Bernardino County