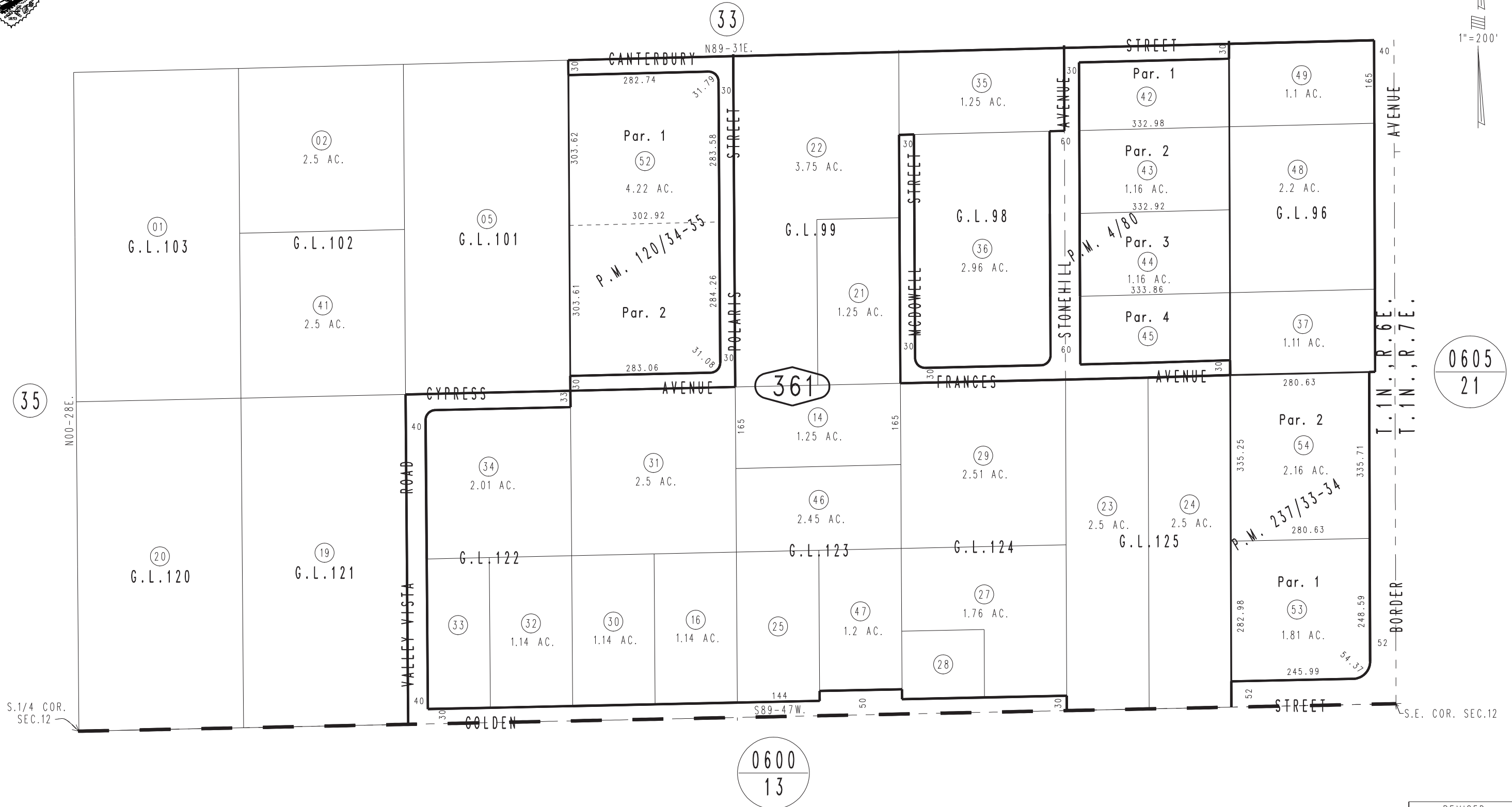


THIS MAP IS FOR THE PURPOSE OF AD VALOREM TAXATION ONLY.

S.1/2, S.E.1/4 Sec.12, T.1N.,R.6E., S.B.B.&M.

Morongo Unified Tax Rate Area 94107

0599-36



January 2005

Parcel Map No. 17351, P.M. 237/33-34  
Parcel Map No. 9891, P.M. 120/34-35  
Parcel Map No. 376, P.M. 4/80

Assessor's Map  
Book 0599 Page 36  
San Bernardino County

REVISED  
03/26/24 CA