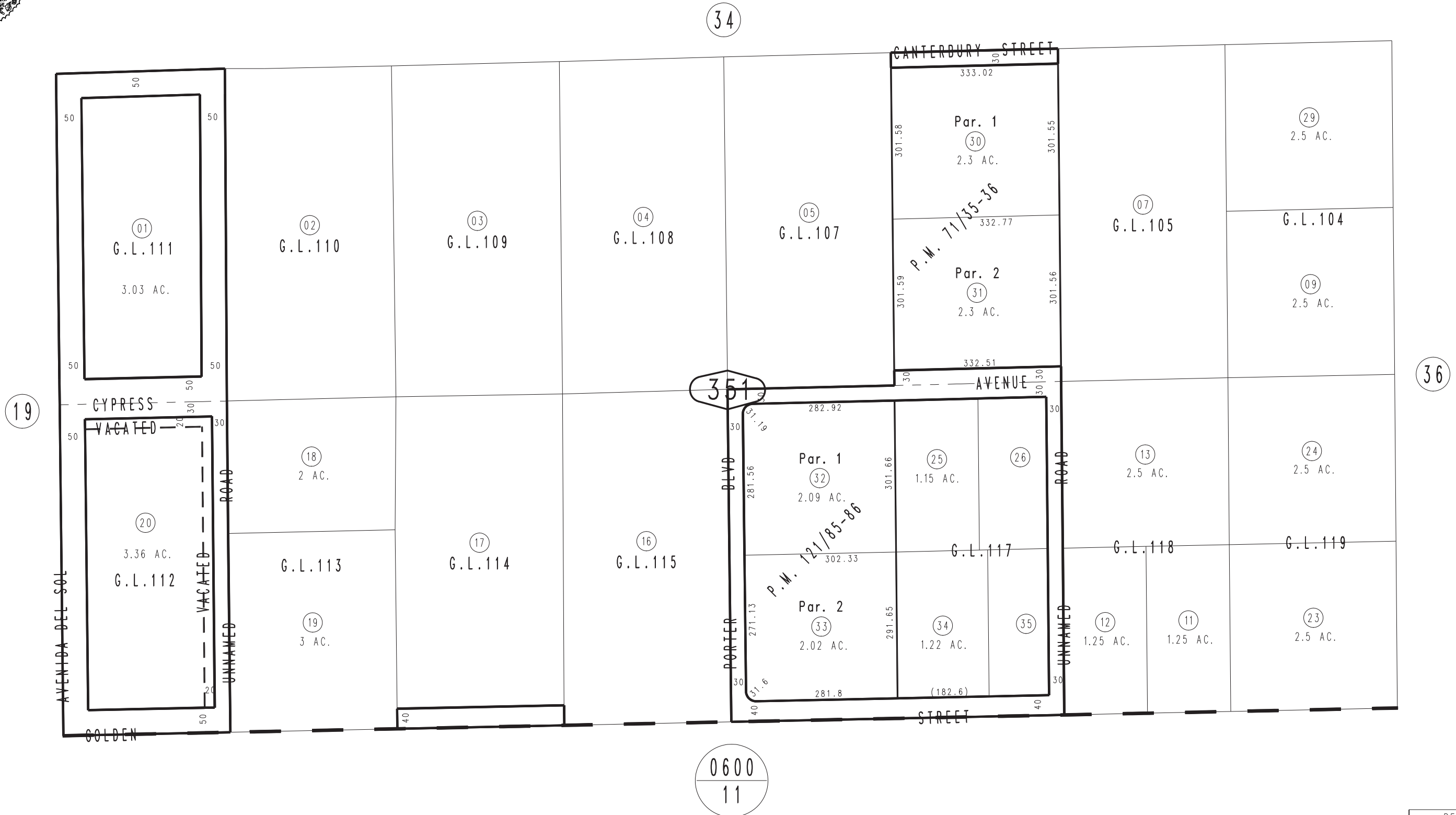


THIS MAP IS FOR THE PURPOSE
OF AD VALOREM TAXATION ONLY.

S.1/2, S.W.1/4 Sec.12, T.1N.,R.6E., S.B.B.&M.

Morongo Unified
Tax Rate Area
94107

0599-35



January 2005

Parcel Map No. 10495, P.M. 121/85-86
Parcel Map No. 7047, P.M. 71/35-36

Assessor's Map
Book 0599 Page 35
San Bernardino County

REVISED
03/24/16 RM-MC