

THIS MAP IS FOR THE PURPOSE
OF AD VALOREM TAXATION ONLY.

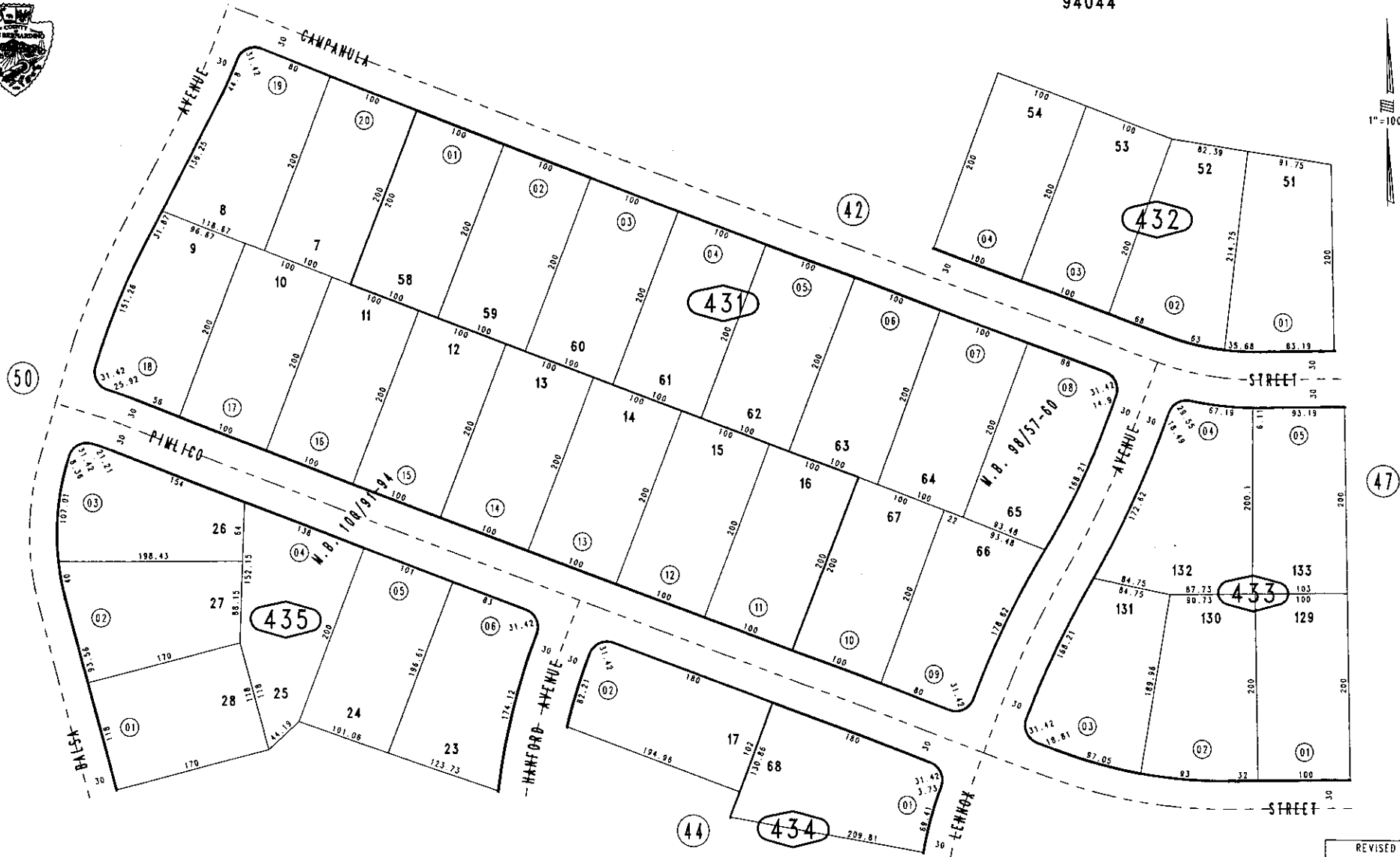
Ptn. Tract No. 7803, M.B. 98/57-60

Morongo Unified
Tax Rate Area
94044

0598-43



1"=100'



January 2005

Ptn. Tract No. 7812, M.B. 100/91-94

Assessor's Map
Book 0598 Page 43
San Bernardino County

REVISED