

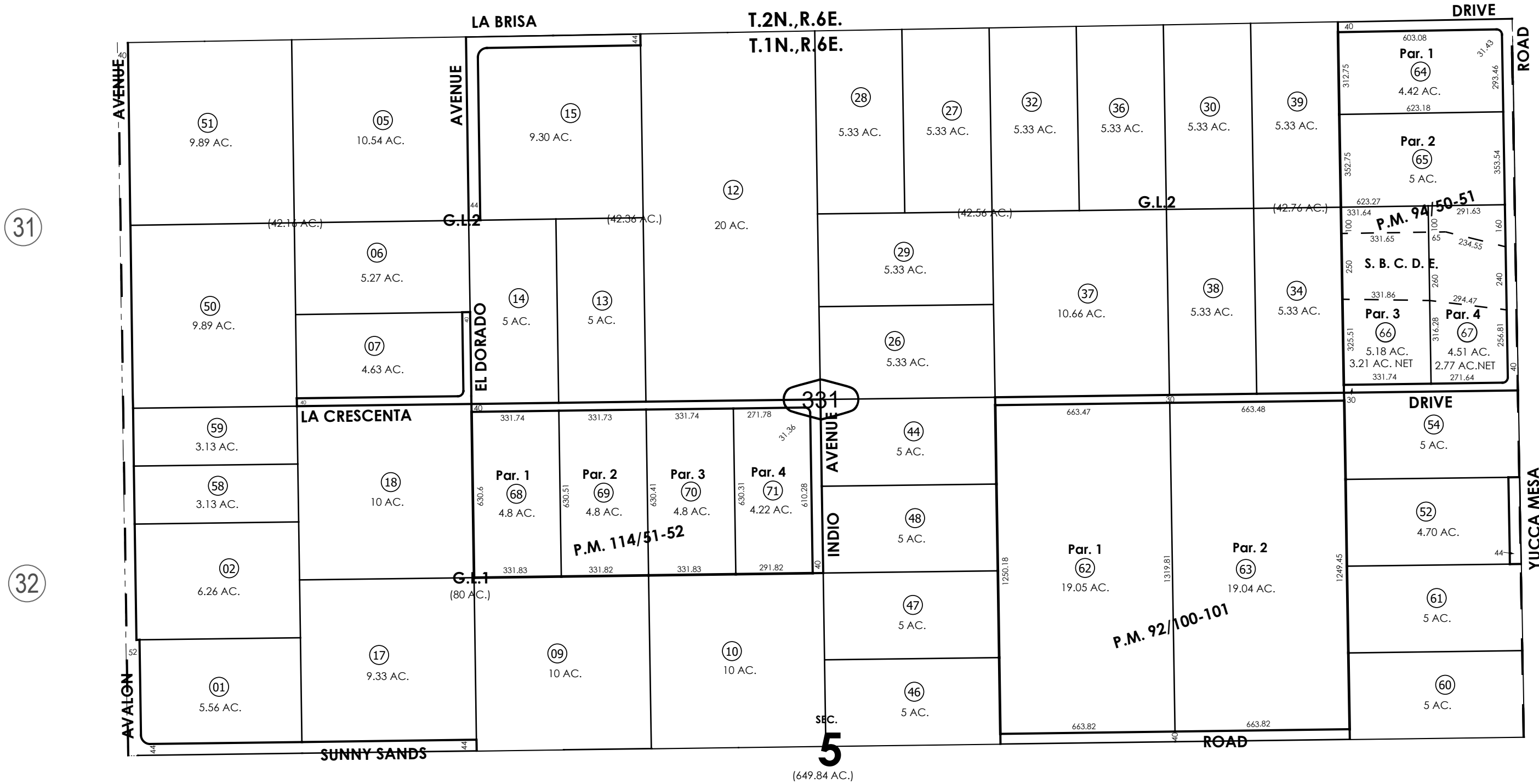
THIS MAP IS FOR THE PURPOSE OF AD VALOREM TAXATION ONLY.

N.1/2 Fractional Sec.5, T.1N.,R.6E., S.B.B.&M.

Morongo Unified Tax Rate Area 94044



0631/09



31

32

0599/15

0599/14

24

Parcel Map No. 8560, P.M. 92/100-101
Parcel Map No. 8781, P.M. 94/50-51
Parcel Map No. 10167, P.M. 114/51-52

January 2005

Assessor's Map
Book 0598 Page 33
San Bernardino County

REVISED
01/06/23 KA
12/11/23 KA
08/12/25 BS