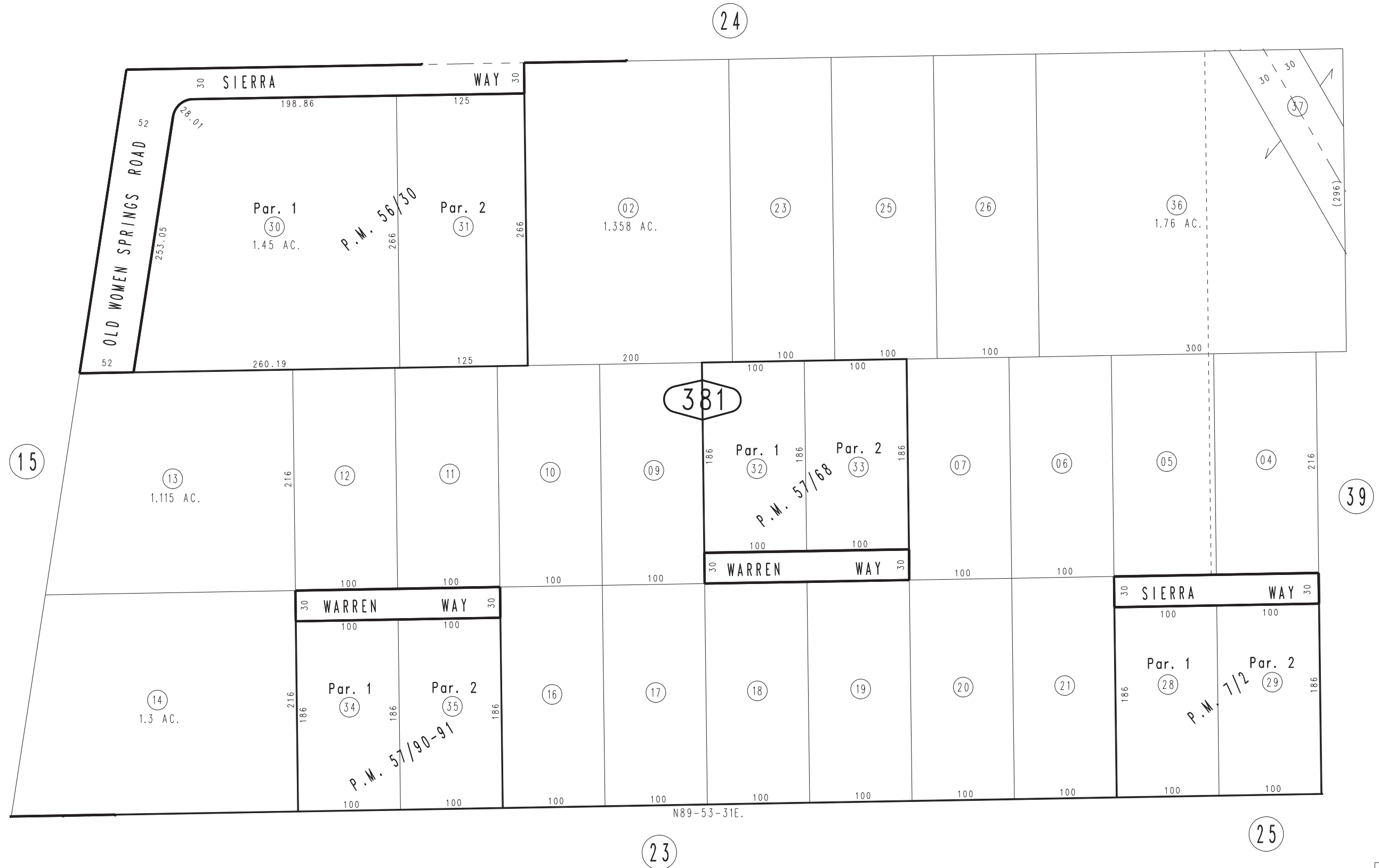


THIS MAP IS FOR THE PURPOSE  
OF AD VALOREM TAXATION ONLY.

Ptn. N.1/2, N.E.1/4, Sec.36, T.1N.,R.5E., S.B.B.&M.

Town of Yucca Valley  
Tax Rate Area  
23000

0595-38



Parcel Map No. 5971, P.M. 57/90-91  
 Parcel Map No. 4721, P.M. 57/68  
 Parcel Map No. 5470, P.M. 56/30  
 Parcel Map No. 723, P.M. 7/2

February 2005

Assessor's Map  
 Book 0595 Page 38  
 San Bernardino County

REVISED  
 05/30/13 RM