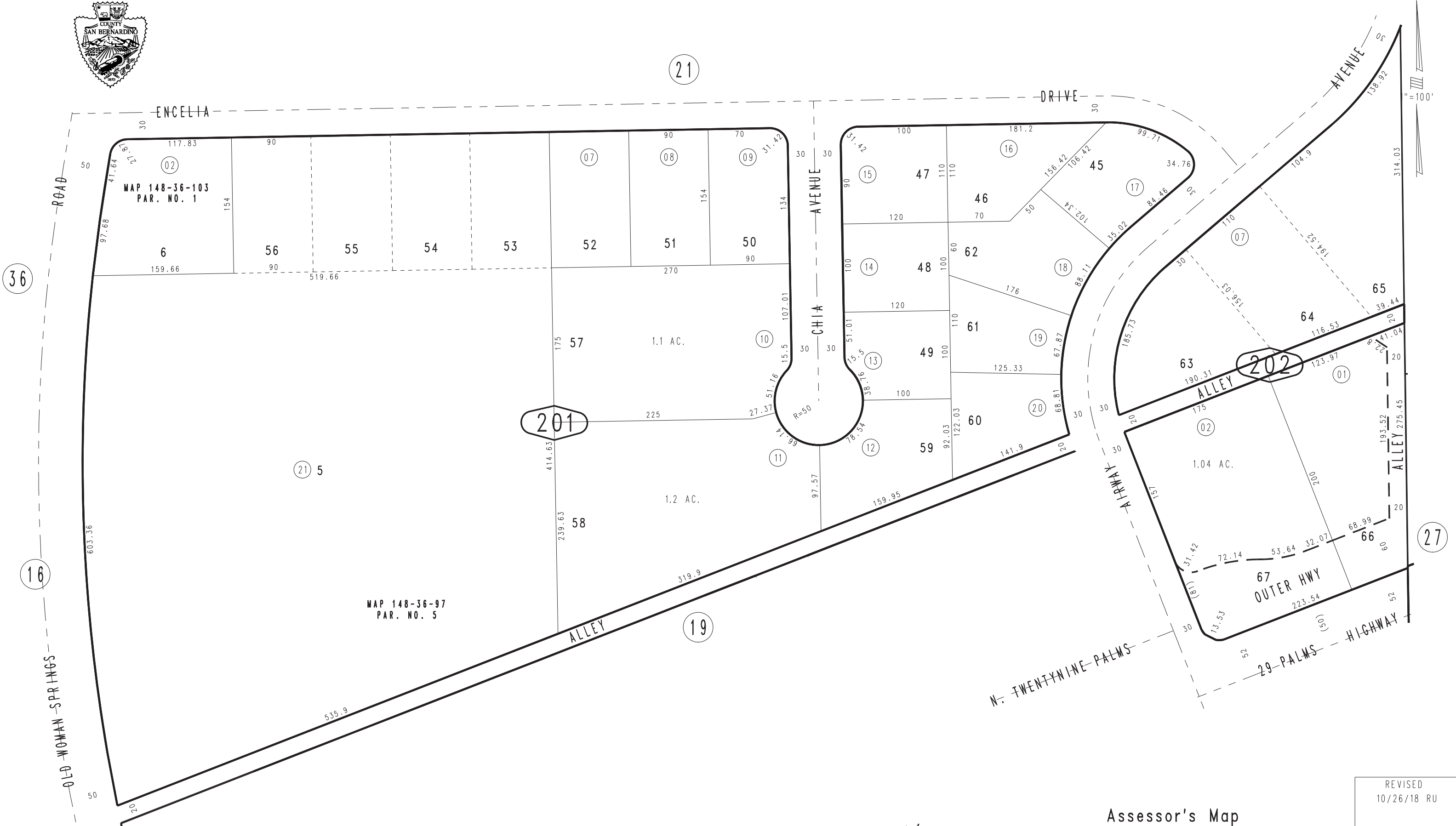


THIS MAP IS FOR THE PURPOSE
OF AD VALOREM TAXATION ONLY.

Ptn. Joshua Forest Estates No. 2, Tract No. 4856 M.B. 70/94-97

Town of Yucca Valley 0595-20
Tax Rate Area
23019



February 2005

Ptn. S.1/2, Sec. 36
T.1N., R.5E.

Assessor's Map
Book 0595 Page 20
San Bernardino County

REVISED
10/26/18 RU