

THIS MAP IS FOR THE PURPOSE
OF AD VALOREM TAXATION ONLY.

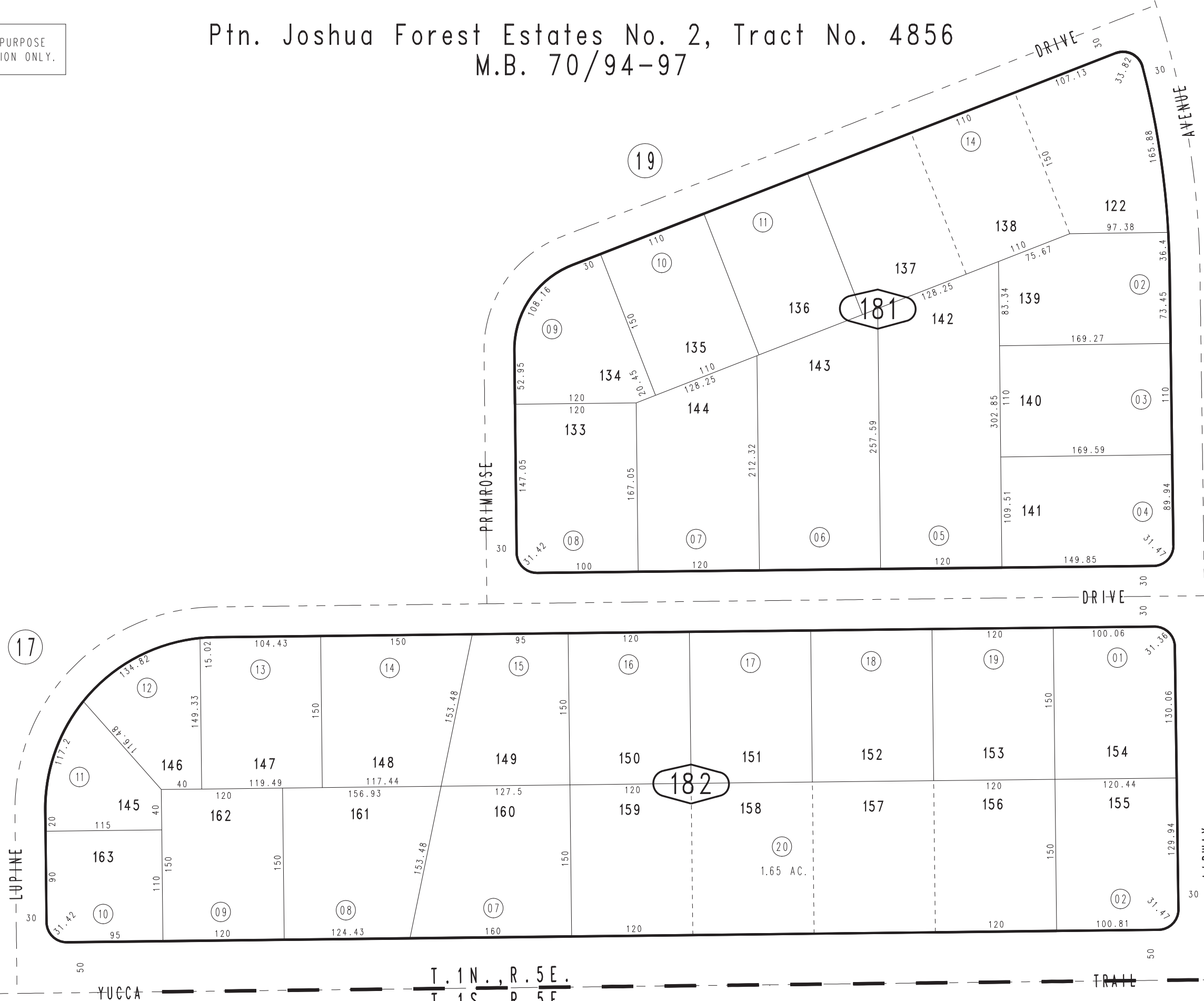


Ptn. Joshua Forest Estates No. 2, Tract No. 4856 M.B. 70/94-97

0595-18

Town of Yucca Valley
Tax Rate Area
23019

1"=100'



S.1/4 COR., SEC.36
T.1N.,R.5E., S.B.B.&M.

S.W. COR. LOT 4, SEC.36
T.1N.,R.5E., S.B.B.&M.

T.1N.,R.5E.
T.1S.,R.5E.

0587
28

Ptn. S.E.1/4, Sec. 36
T.1N., R.5E.

Assessor's Map
Book 0595 Page 18
San Bernardino County

REVISED
05/18/09 LH