

THIS MAP IS FOR THE PURPOSE
OF AD VALOREM TAXATION ONLY.

S.1/2, N.W.1/4 Fractional Sec.19, T.1N.,R.5E., S.B.B.&M.
Ptn. Assessor's Map No. 13, O.M. 1/22-23

Morongo Unified
Tax Rate Area
94035

0594-22



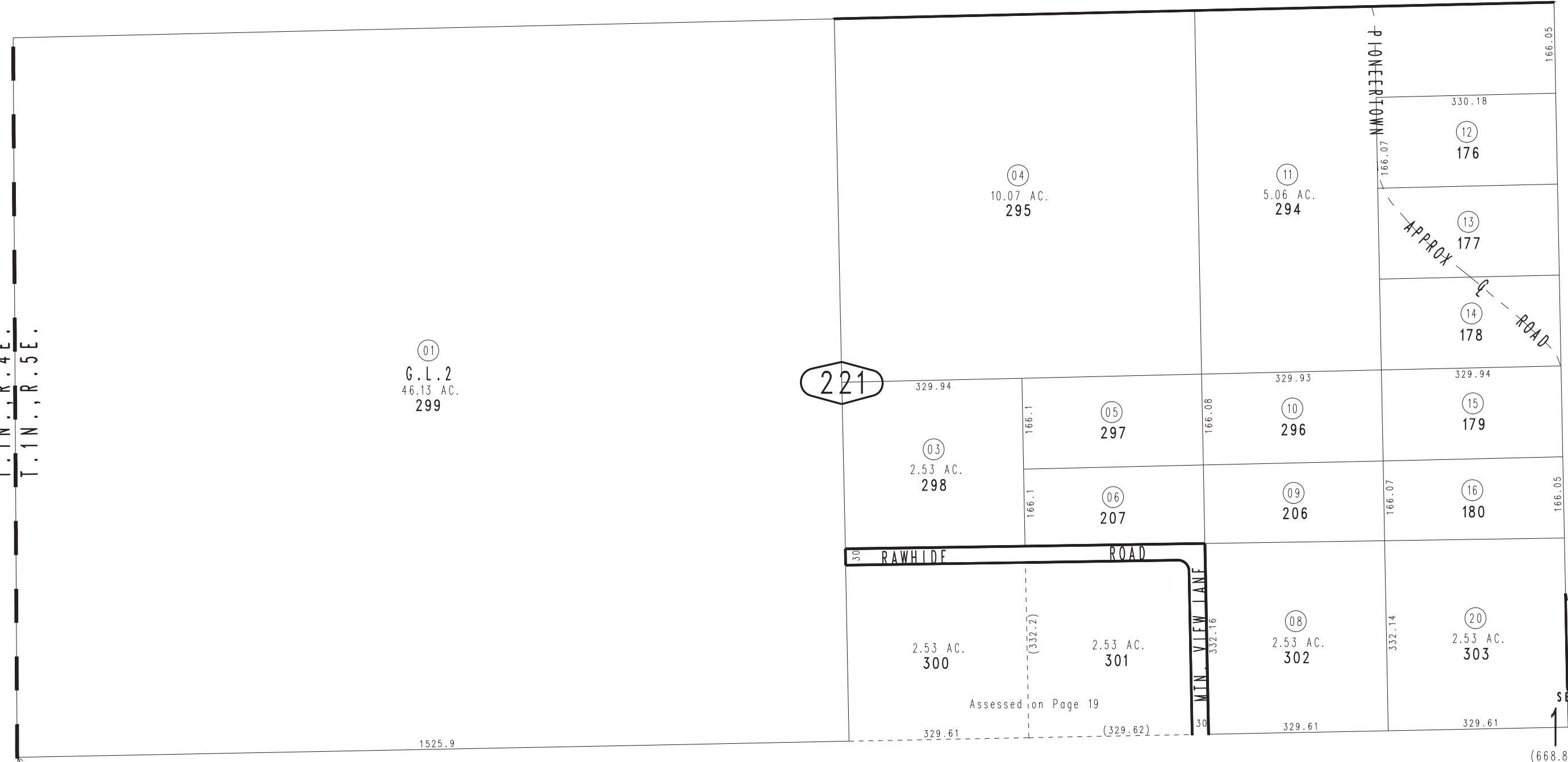
0593
03

T.1N.,R.4E.
T.1N.,R.5E.

01
G.L.2
46.13 AC.
299

221

21



W.1/4 COR. SEC.19

19

SEC.
19
(668.85 AC.)