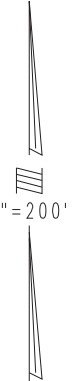


THIS MAP IS FOR THE PURPOSE OF AD VALOREM TAXATION ONLY.

N.1/2, S.W.1/4 Fractional Sec.19, T.1N.,R.5E., S.B.B.&M.
Ptn. Assessor's Map No. 13, O.M. 1/22-23

Morongo Unified
Tax Rate Area
94035

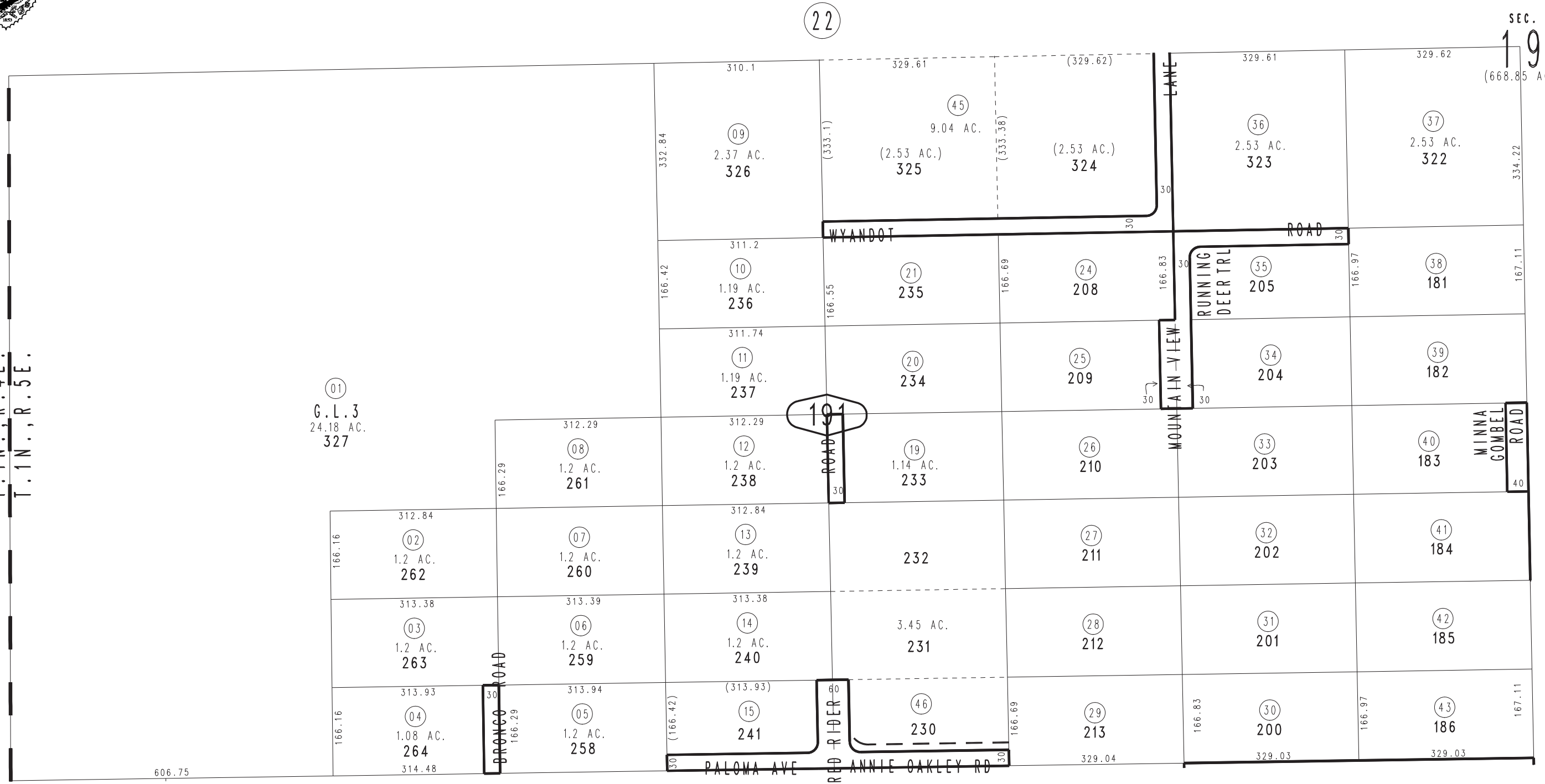
0594-19



0593
03

T.1N.,R.4E.
T.1N.,R.5E.

01
G.L.3
24.18 AC.
327



SEC.
19
(668.85 AC.)

20

18