

THIS MAP IS FOR THE PURPOSE
OF AD VALOREM TAXATION ONLY.

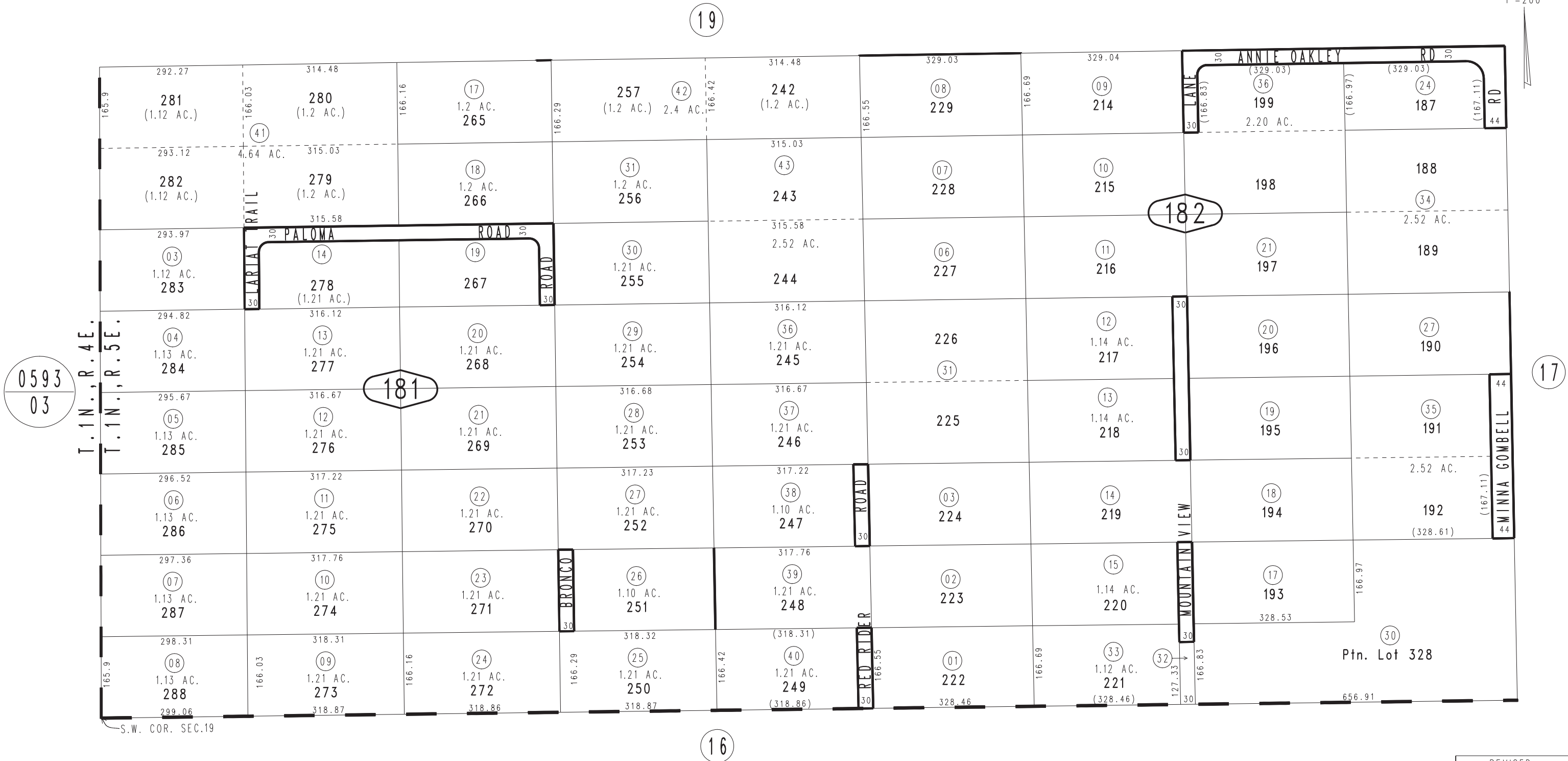
S.1/2, S.W.1/4 Fractional Sec.19, T.1N.,R.5E., S.B.B.&M.
Ptn. Assessor's Map No. 13, O.M. 1/22-23

Morongo Unified
Tax Rate Area
94035

0594-18



1"=200'



0593
03

181

182

17

16