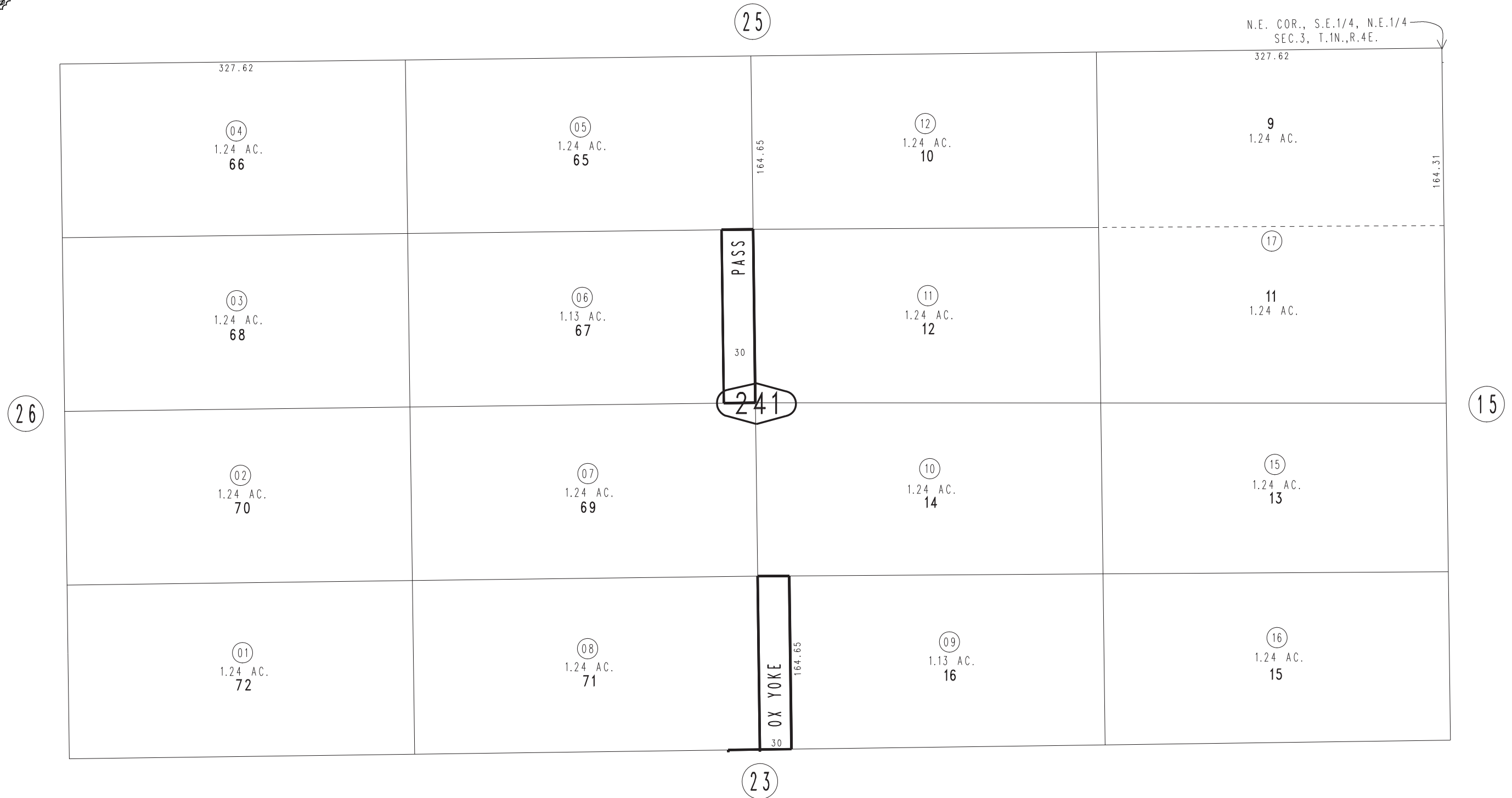


THIS MAP IS FOR THE PURPOSE  
OF AD VALOREM TAXATION ONLY.

# Ptn. Assessor's Map No. 12 O.M. 1/21

Morongo Unified  
Tax Rate Area  
94041

0593-24



N.E. COR., S.E.1/4, N.E.1/4  
SEC.3, T.1N.,R.4E.