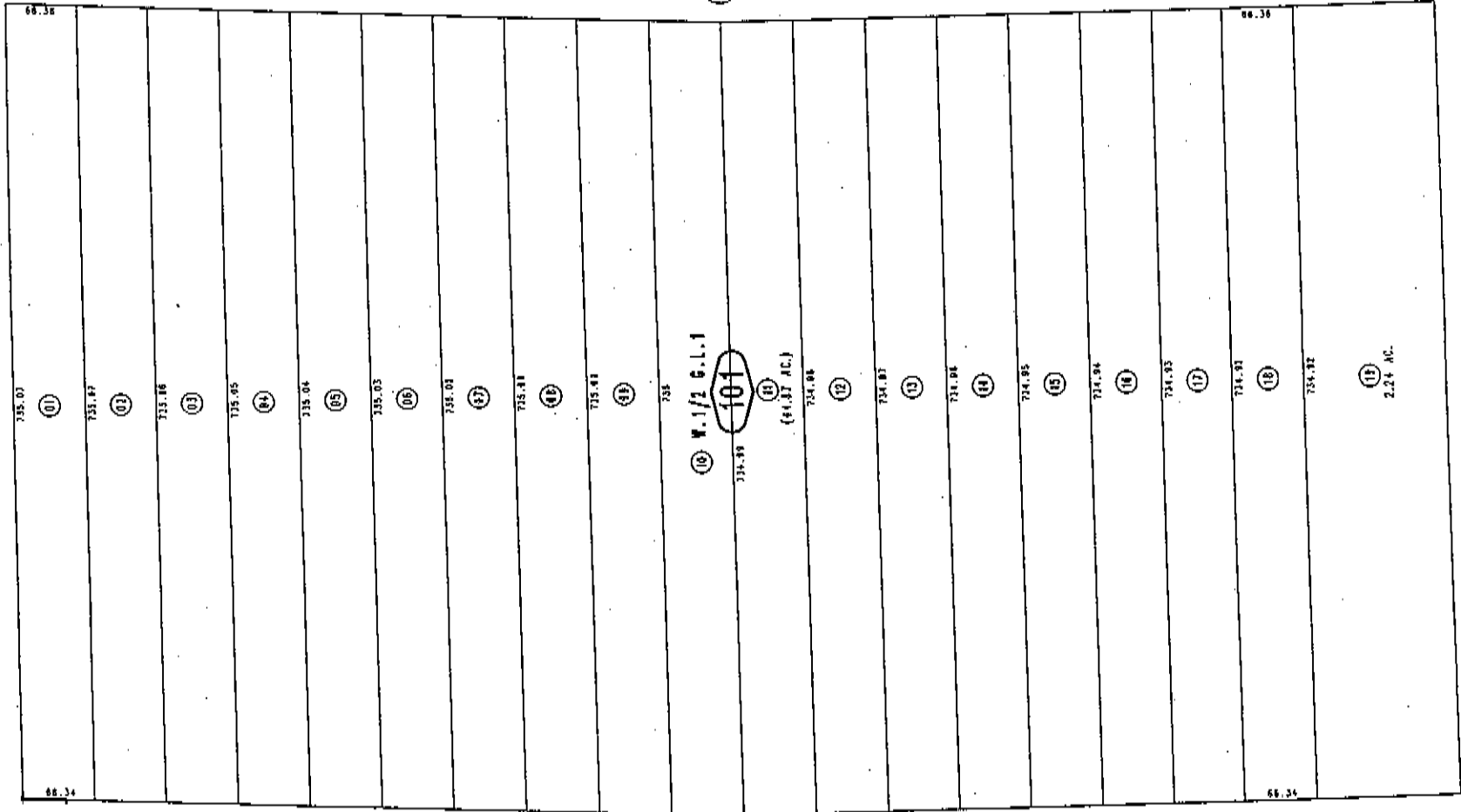


THIS MAP IS FOR THE PURPOSE
OF AD VALOREM TAXATION ONLY.

W.1/2, N.E.1/4, N.E.1/4, Sec.13, T.1N.,R.4E., S.B.B.&M.

Morongo Unified
Tax Rate Area
94041

0593-10



March 2005

Assessor's Map
Book 0593 Page 10
San Bernardino County

REVISED