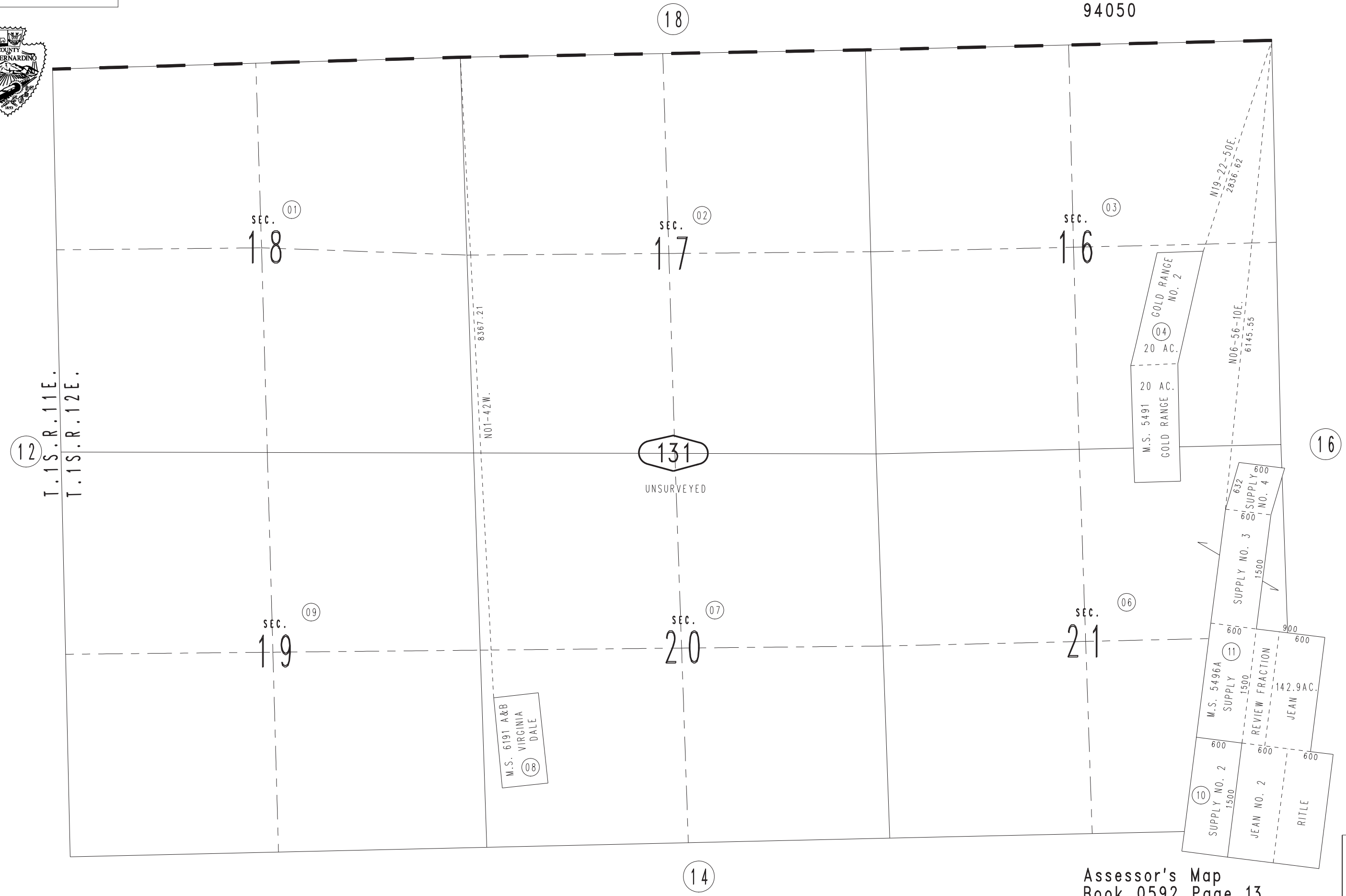


THIS MAP IS FOR THE PURPOSE OF AD VALOREM TAXATION ONLY.

Sec.16,17,18,19,20,21 & Ptn. Sec.22,27&28, T.1S.,R.12E., S.B.B.&M.

Morongo Unified Tax Rate Area 94050

0592-13



M.S. 6191 A&B VIRGINIA DALE

M.S. 5491 GOLD RANGE

M.S. 5496A SUPPLY NO. 3 REVIEW FRACTION JEAN RITLE