

THIS MAP IS FOR THE PURPOSE
OF AD VALOREM TAXATION ONLY.

N.1/2 Fractional Sec.2, T.1S.,R.9E., S.B.B.&M.

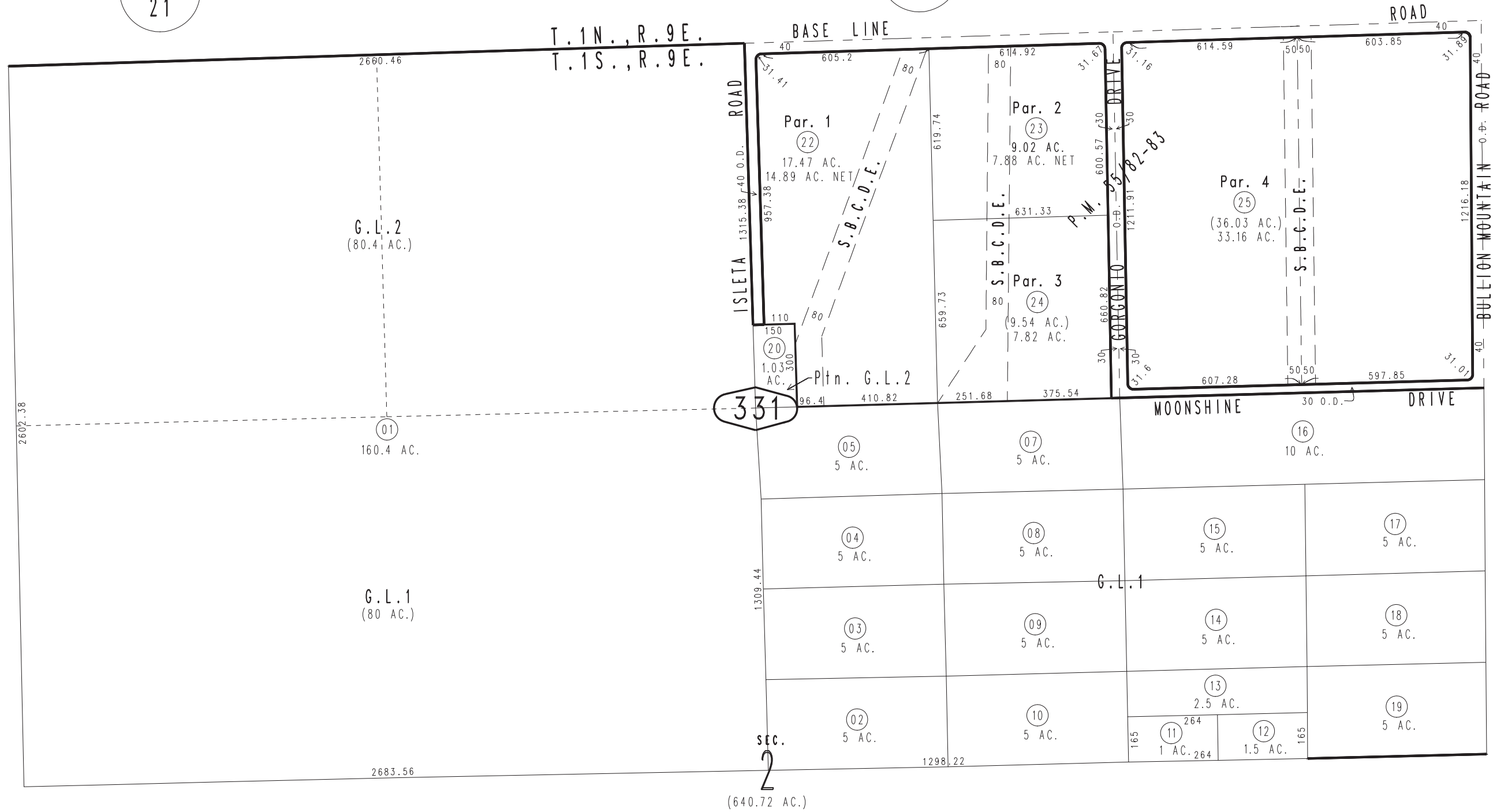
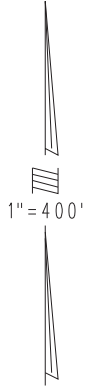
City of Twentynine Palms
Tax Rate Area
19001

0591 - 33



0624
21

0624
22



0590
34

34

331

SEC. 2

32