

THIS MAP IS FOR THE PURPOSE  
OF AD VALOREM TAXATION ONLY.

S.1/2, S.W.1/4 Fractional Sec.11, T.1S.,R.9E., S.B.B.&M.

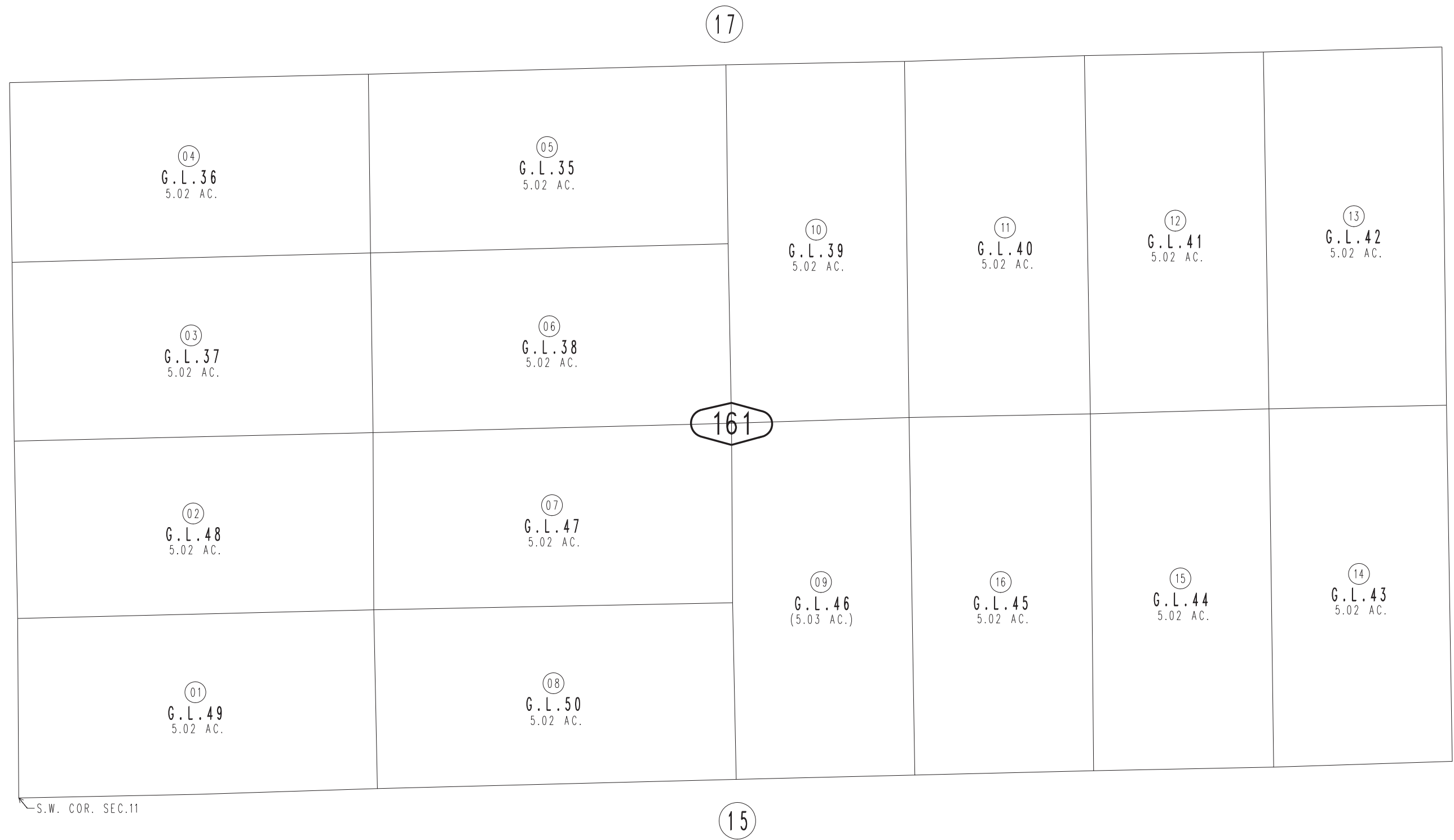
City of Twentynine Palms  
Tax Rate Area  
19001

0591 - 16



0590  
14

27



S.W. COR. SEC.11