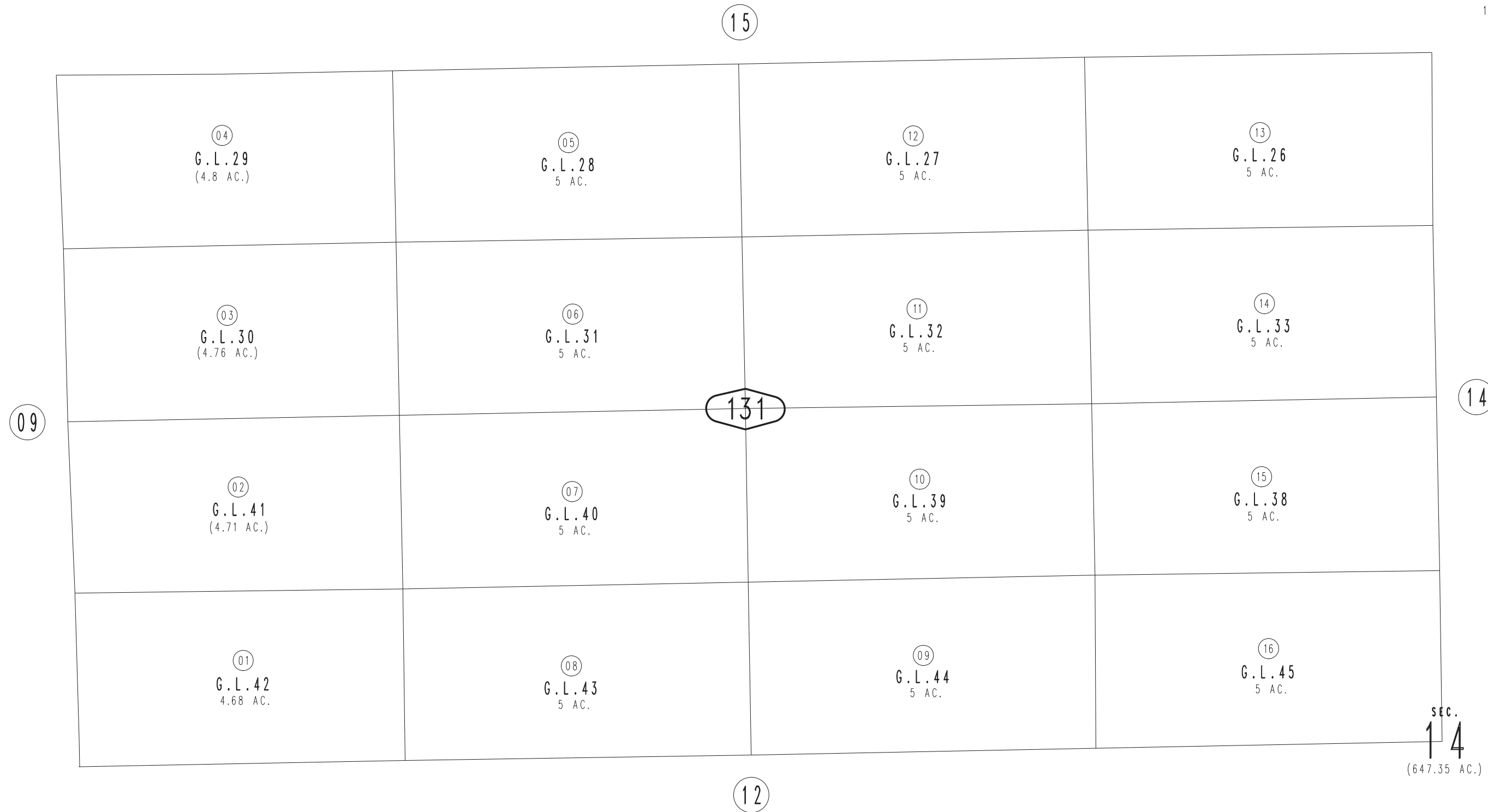


THIS MAP IS FOR THE PURPOSE  
OF AD VALOREM TAXATION ONLY.

S.1/2, N.W.1/4 Fractional Sec.14, T.1S.,R.9E., S.B.B.&M.

City of Twentynine Palms  
Tax Rate Area  
19001

0591 - 13



SEC.  
14  
(647.35 AC.)