

THIS MAP IS FOR THE PURPOSE
OF AD VALOREM TAXATION ONLY.



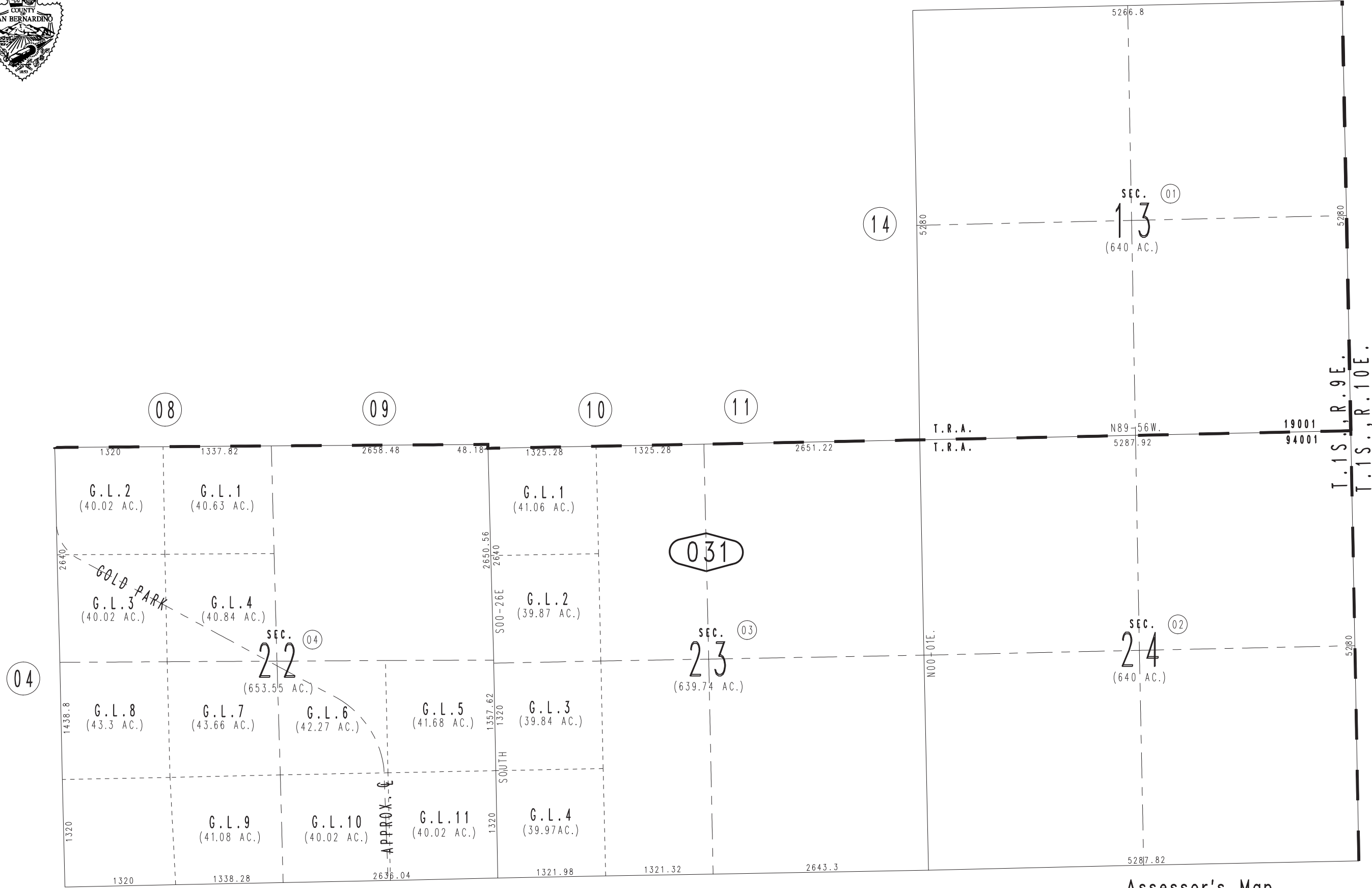
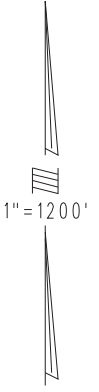
Sec.13&24, & Fractional Sec.22&23, T.1S.,R.9E., S.B.B.&M.

Morongo Unified
City of Twentynine Palms
Tax Rate Area
19001 94001

0591 - 03

28

29



0592
01

REVISED