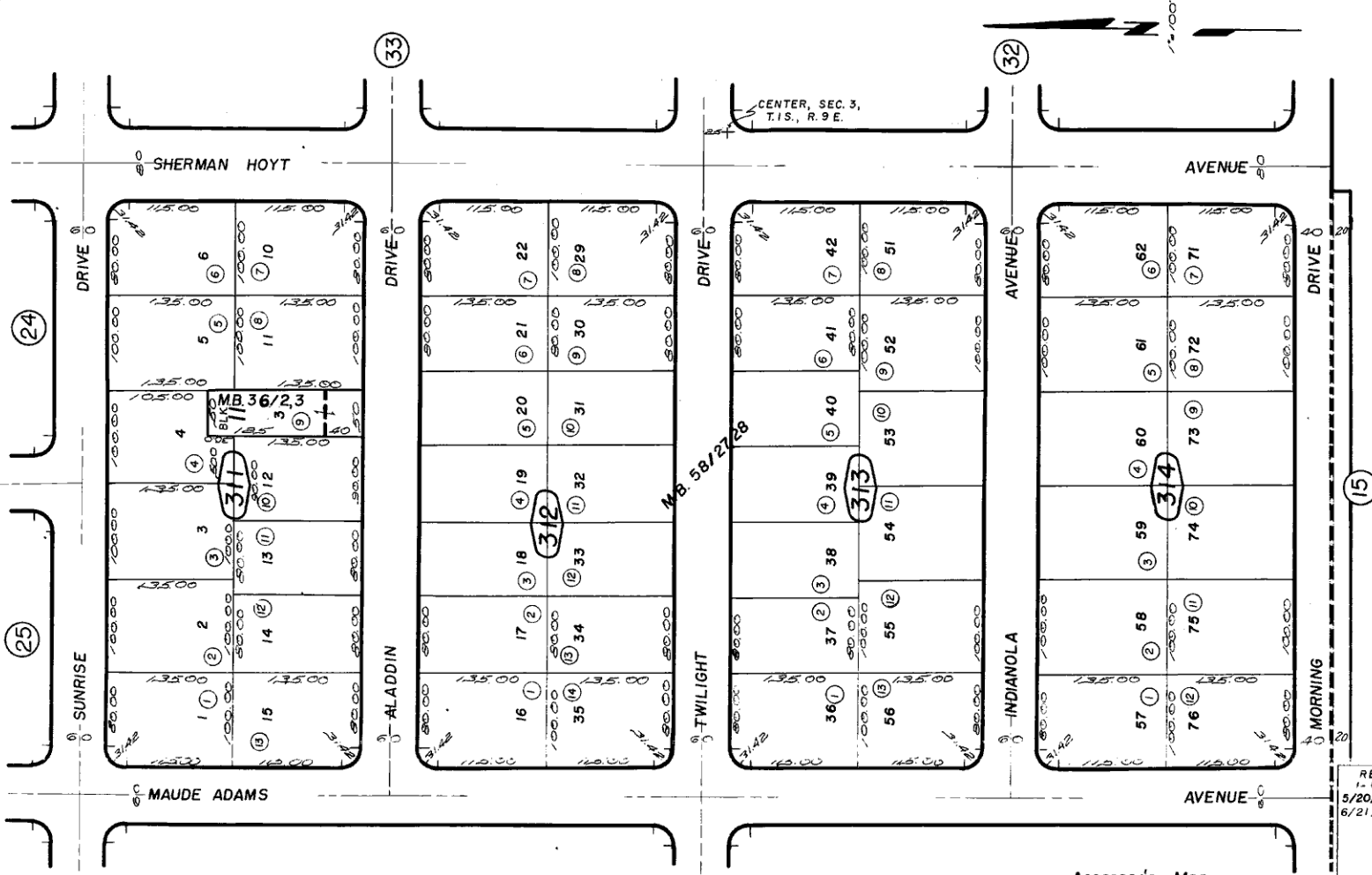




Por. Twentynine Palms "Desert Home" Subdivision, Unit No. 1, Tract No. 2504, M.B. 36/2,3 City of Twentynine Palms 590-31
 Por. Tract No. 4414, M.B. 58/27, 28

Tax Rate Area
19001



Note- Assessor's Blk. & Lot
Numbers Shown in Circles

Assessor's Map
Book 590 Page 31
San Bernardino County

REVISE
1-11-89
5/20/88 RM
6/21/94 RM