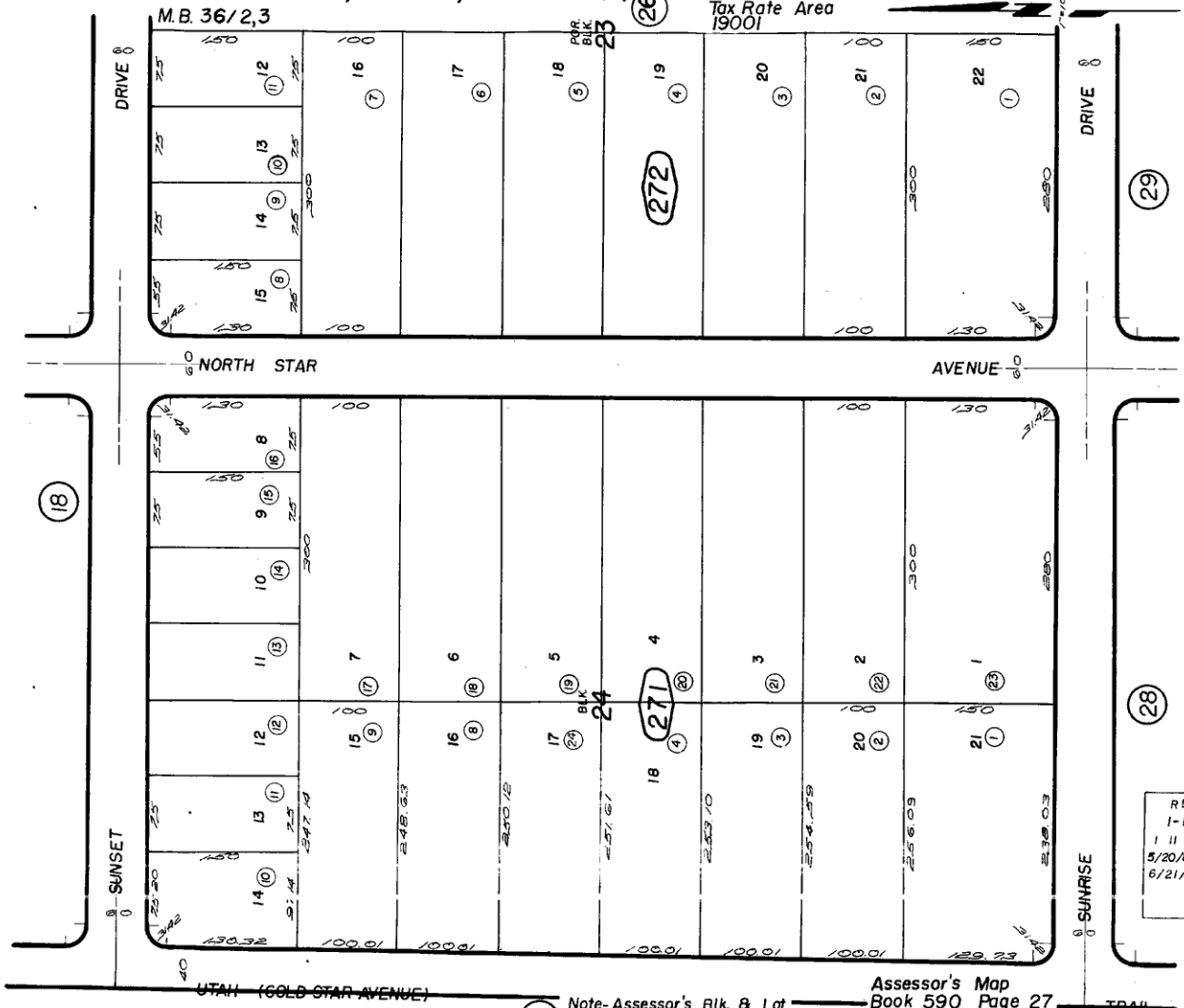




Por. Twentynine Palms "Desert Home" Subdivision, Unit No.1, Tract No.2504

City of Twentynine Palms
Tax Rate Area
19001



REVISED
1-11-68
1 11 74 GH
5/20/88 RM
6/21/94 RM

Note-Assessor's Blk. & Lot
Numbers Shown in Circles

Assessor's Map
Book 590 Page 27
San Bernardino County